

CONTENTS

Sect.	1.1	INTRODUCTION.....	Page 3
Sect.	2.1	GENERAL INFORMATION.....	Page 4
Sect.	3.1	PRODUCT DESCRIPTION.....	Page 5
		<u>TANKS</u>	
Sect.	4.1	Tank – description	Page 6
	.2	Specifications – size and weight.....	Page 7
	.3	Tank preparation	Page 8
	.4	Safety check valve	Page 10
	.5	Check valve maintenance	Page 10
	.6	Routine maintenance – tanks	Page 10
		<u>PUMP DISPENSERS</u>	
Sect.	5.1	Pump dispensers – size and weight.....	Page 11
	.2	Pump dispenser - M K.....	Page 12
	.3	Starting - M K.....	Page 12
	.4	Operation - M K.....	Page 12
	.5	Maintenance M K - troubleshooting.....	Page 13
Sect.	6.1	Dispenser box 5 K - 6 K.....	Page 14
	.2	Dispenser box 8 K - 10 K.....	Page 14
	.3	Dispenser box 4 K - 9 K dc.	Page 15
	.4	Mini pump dispenser CUBE - C K.....	Page 15
	.5	Pump dispenser SS 70 (100) TANK K44	Page 16
	.6	Pump dispenser SS 70 (100) TANK MC/FM.....	Page.....16
Sect.	7.1	Electrical connection with ACP 3.1	
		pump dispensers 5 K - 6 K - 8 K - 10 K.....	Page 17
	.2	Electrical connection with overload cutout	
		pump dispensers 5 K - 6 K - 8 K - 10 K.....	Page 19
	.3	Electrical connection mini disp. C K (cube).....	Page 19
	.4	Electrical connection dispenser SS 70 - SS 100	Page 20
	.5	Electrical connection dispenser 4 K - 9 K dc.....	Page 20
	.6	Starting	Page 21
	.7	Operation – pump dispensers	Page 22
	.8	Routine maintenance - pump dispensers	Page 23
	.9	Troubleshooting	Page 24
	.10	Litre-counter calibration	Page 25

C O N T E N T S (contd.)

SPARE PARTS

Sect.	8.1	Spare parts Diesel Tank	Page	26
	.2	Spare parts pump dispensers.	Page	27
Sect.	9.1	Detail hand pump G P I.	Page	28
	.2	Detail pump E 55	Page	29
	.3	Detail pump PANTHER 56 - 72.....	Page	30
	.4	Detail pump E 80 / 120	Page	31
	.5	Detail pump BY PASS 2000	Page	32
	.6	Detail pump BIPUMP	Page	33
	.7	Detail dispenser C K 56 / 70 K33	Page	34
	.8	Detail dispenser C K 70 MC 30.....	Page	36
	.9	Detail dispenser SS 70/100 TANK K44 (Pulser)	Page	39
	.10	Detail dispenser SS 70/100 TANK MC / FM.....	Page	41
	.11	Detail litre-counter K 33 – K 44	Page	43

CALIBRATION TABLE

Sect.	10.1	Calibration table tank	DTO 10 - 1,000 litres.....	Page	44
	.2	DTO 15 - 1,500 litres.....	Page	45
	.3	DTO 20 - 2,000 litres.....	Page	46
	.4	DTO 35 - 3,380 litres.....	Page	47
	.5	DTO 50 - 5,000 litres.....	Page	48
	.6	DTO 70 - 7,000 litres.....	Page	49
	.7	DTO 90 - 9,000 litres.....	Page	50

LEGISLATION

Sect.	11.1	D. M. 19 March 1990	Page	51
	.2	Fire Prev. Cert. exemption - M.Int. circ. No. 6.100 - 4113 / 170.....	Page	52
	.3	License exemption M. of Industry - ANCE.....	Page	53
	.4	Type approval certificates.....	Page	55

1.1**INTRODUCTION**

AMA SpA has been present on the market for more than fifteen years with its well-known range of mobile pump-tanks called DIESEL TANK, which are particularly appreciated for their quality and functionality – features that the company has always strived to attain in order to ensure full customer satisfaction.

Thousands of plants produced over the years and distributed all over Italy and abroad have given AMA a unique wealth of experience in the sector of fuel storage and dispensing for installations outside a network and especially for work site purposes.

Continual research into technological innovation applied to the sector and an assiduous control to achieve ever-higher product quality, also through ISO 9001 certification, are what make AMA S.p.A. a foremost company in the sector.

*Diesel Tank - O, called more simply **DT O**, are mobile pump-tanks designed and made by **AMA SpA** to resolve problems connected with fuel storage and the refuelling of vehicles and equipment used on farms, building/work sites and in quarries in compliance with current legislation.*

*The **DT O** tanks have been approved by the Ministry of the Interior pursuant to heading I, subparagraph XVII of Italian Ministerial Decree of 31.07.1934, as laid down by the Interministerial Decree of 19.03.1990, giving rules and regulations for use of said mobile pump-tanks.*

*The **DT O** are **EXEMPT FROM FIRE PREVENTION CERTIFICATION**, pursuant to Italian Ministry of the Interior circular letter No. 6100 of 12.04.1990 prot. 4113 / 170.*

*The **DT O ARE NOT SUBJECT TO LICENSING** as confirmed by the Energy Sources Directorate-General of the Italian Ministry of Industry in its memorandum No. 620473 of 13/03/91 in reply to the query raised by the National Builders' Association in Rome.*

*The above legislation is given in full in Sect. - 11.1 from page **49** onwards.*

*For correct installation and use of the **Diesel Tanks**, it is advisable to refer to the rules for installation and use described under “**GENERAL INFORMATION**” (Sect. 2.1 – Page 8) and “**TANK PREPARATION**” (Sect. 4.3 – Page 8).*

2.1**GENERAL INFORMATION**

Although the mobile pump-tanks Diesel Tank - O in the DT O version are not subject to inspection by the Fire Brigade or Fire Service, they must be installed according to the specifications and rules laid down in Italian Ministerial Decree 19.03.1990, complying in particular with the requirements given below.

- Mobile pump-tanks must have a containment basin equal to at least half the volume of the actual tank. A.M.A. s.r.l. can supply Ministry-approved fully removable metal containment basins for the DT O, with reinforced bottom, which are particularly suitable for installation on any type of terrain and designed for fitting with a roof. The relative protective roofs can also be supplied in a version made with sturdy metal frame covered by galvanised corrugated plate. The whole production range of DT O is suitably weatherproofed by means of special exterior reflecting paint.
- Mobile pump-tanks must be placed inside private areas and at a safe distance of at least 3 m from surrounding buildings and any vegetation which could propagate fire.
- Installations must be at a safe distance of at least 5 m from main roads and rivers and 20 m from railway lines.
- Installations must be at a safe distance of at least 6 m in all directions from the perpendicular of the external conductor of H.T. overhead lines, while in the case of L.T. overhead electric lines it is sufficient for their perpendicular to be outside the actual plant.
- Mobile pump-tanks must be electrically connected in conformity with current CEI regulations and must be efficiently earthed.
- Prohibitions and limitations envisaged in Italian Ministerial Decree 31.07.34 must be observed, i.e.: no smoking or naked flames near the plant; all motors to be switched off during refuelling; etc..
- Extinguishers, as specified in Italian Ministerial Decree 19.03.1990, must be kept near mobile pump-tanks.

3.1 PRODUCT DESCRIPTION

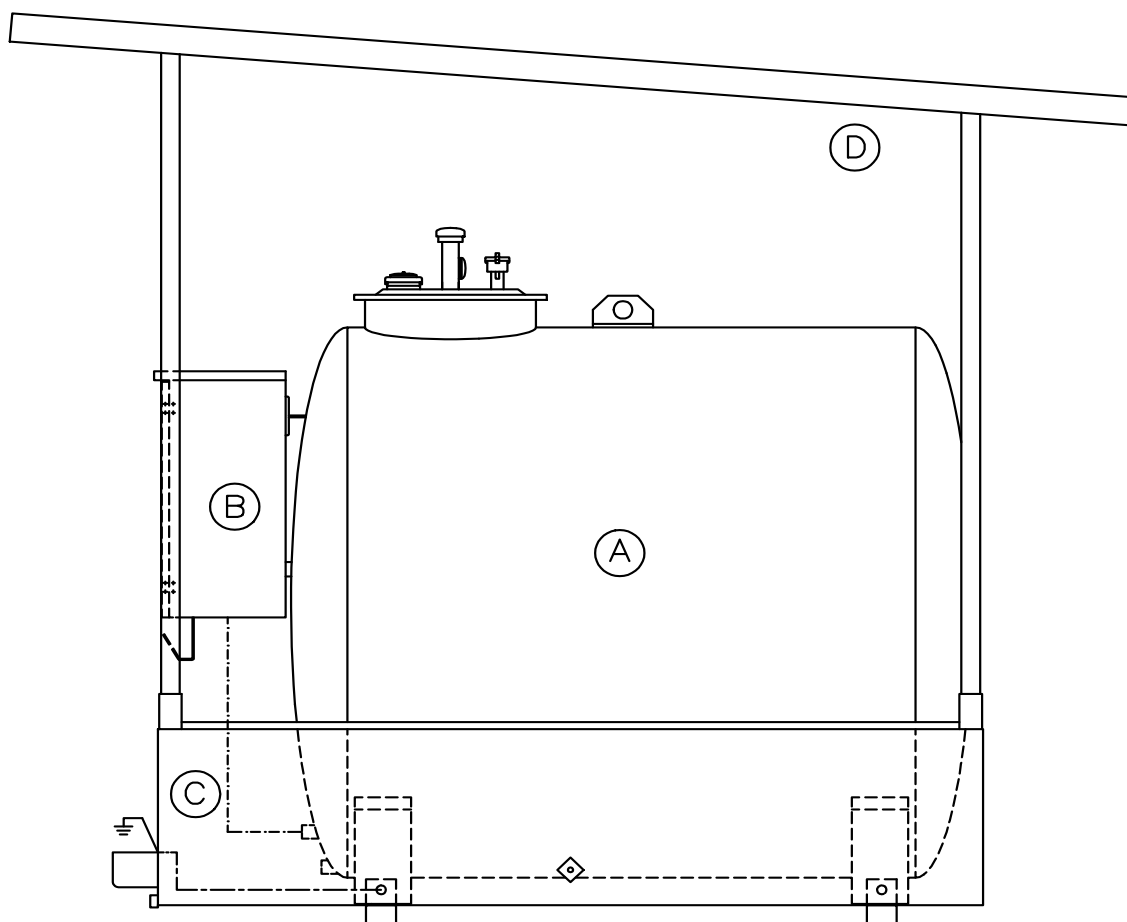
THE **DT O** TANKS CONSIST OF TWO BASIC PARTS AS FOLLOWS:

- Ⓐ **TANK** : part relative to category “C” liquid fuel storage.
- Ⓑ **PUMP DISPENSER** : part relative to the dispensing of the liquid fuel stored in the tank.

AND TWO COMPLEMENTARY PARTS AS FOLLOWS:

- Ⓒ **CONTAINMENT BASIN** : part relative to safety against any fuel leakage/spillage.
- Ⓓ **ROOF** : part relative to protection against the elements.

Figure 1



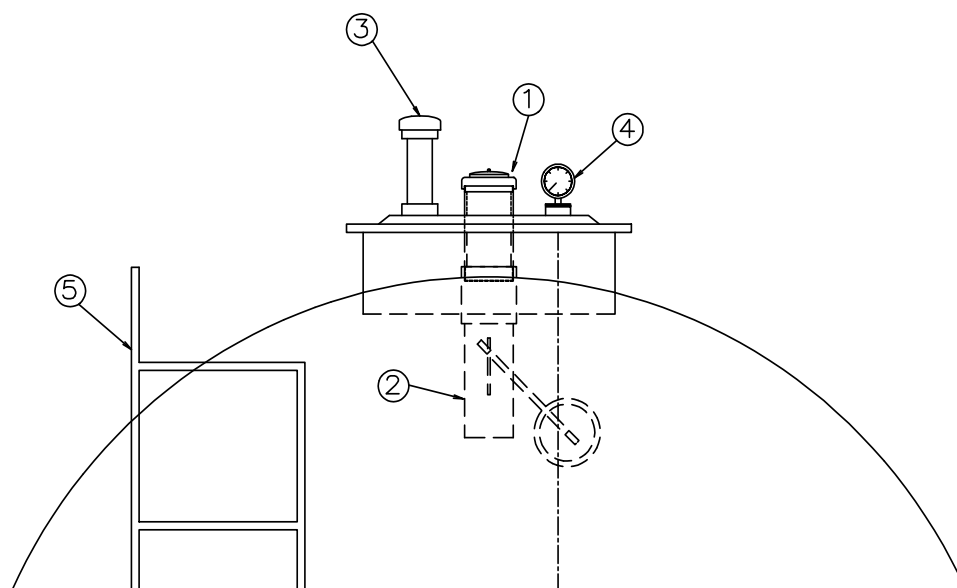
4.1
Ⓐ - TANK
DESCRIPTION
Mod. D T -O

Horizontal cylindrical metal tank with supporting feet, thickness 3 mm, capacity 1,500 l to 9,000 l, described in detail below, supplied with the following accessories:

TOP PART:

- eyebolt for lifting when empty
- manhole dia. 450 mm. complete with:
 - ① UNI - 3" quickfit filling connection;
 - ② 3" pressure relief valve;
 - ③ 1 ½" breather pipe with end-of-line flame arrester;
 - ④ float gauge;

Figure 2


SIDE:

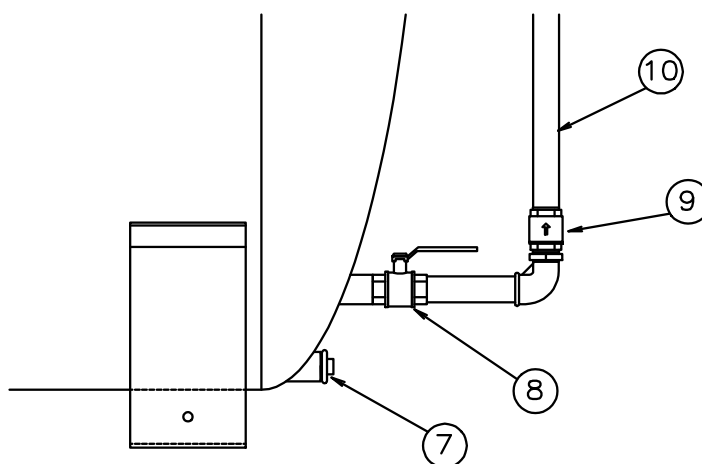
- ⑤ inspection ladder for filling inlet (for versions DT O 80 and DT O 90 only).

4.1
TANK

(DESCRIPTION CONTD.)

BOTTOM PART:

- equipotential and earthing connection in AISI steel, located near the supporting feet.
- ⑦ 1" total downflow bottom drain, with safety plug.
- ⑧ 1" suction pipe, raised from the bottom (12 - 13 cm) fitted with an on-off valve.
- ⑨ 1" safety check valve, calibrated at 0.25 bar, permitting the product to flow out only when the pump is in the suction stage.
- ⑩ pipe connecting to the pump dispenser.

Figure 3


- full exterior coating 70 μ thick with reflecting chlorinated rubber paints applied on top of 60 μ thick layer of zinc phosphate primer.

4.2
SPECIFICATIONS

SIZE AND WEIGHT

Model	Capacity Litres	Tank size Dia. x L. mm	Size with containment basin mm	Weight with containment basin kg
DT - O 10	1000	900 X 1730	1500 X 2200 X 1400	280
DT - O 15	1500	1100 X 1750	1500 X 2200 X 1600	305
DT - O 20	2000	1270 X 1730	1500 X 2200 X 1800	325
DT - O 35	3500	1600 X 1810	1800 X 2400 X 2200	420
DT - O 50	4900	1600 X 2560	2000 X 3000 X 2200	580
DT - O 70	7000	1700 X 3300	2000 X 3800 X 2300	765
DT - O 90	8700	2100 X 2690	2400 X 3400 X 2600	990

4.3**TANK PREPARATION**

N.B.: Before filling the tank, the following preliminary operations are recommended

**BREATHER PIPE**

This is normally to be found inside the containment basin and is installed in the relative 1 ½" coupling on the manhole.

- Remove the protective plastic cap.
- Screw on the breather pipe inserting Teflon.

**LEVEL GAUGE**

This is normally to be found inside the dispenser unit (in the Box version) and is installed in the relative 1 ½" coupling on the manhole.

- Remove the protective plastic cap.
- Place the float inside the tank and screw down the level gauge, inserting Teflon.
- Unscrew the transparent cover (in the 240 cm version) or adjust the rotation screw located to the side of the dial (in the 200 cm version) and place the pointer on the mark corresponding to the liquid level (0 if empty).
- Refit the transparent cover (in the 240 cm version).

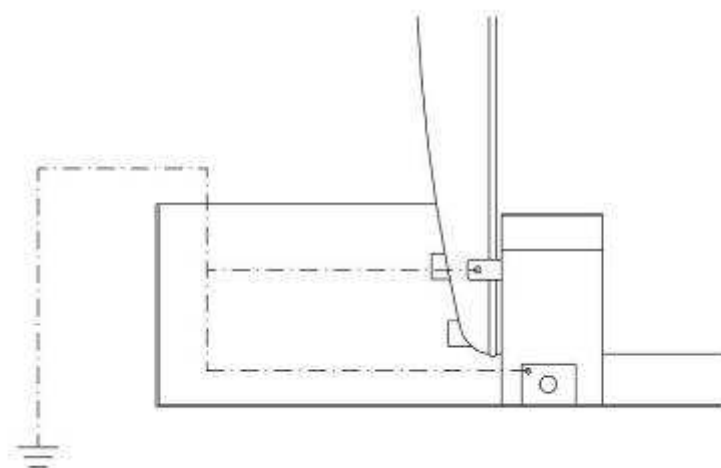
The pointer will now indicate the exact level of liquid in the tank.

**EARTHING or GROUNDING**

The DT O is fitted with an earthing/ground plate welded onto one of the two front supporting feet of the tank.

- Connect the stainless steel plate to a suitable earth connection.
- If the DT O has a metal containment basin, the latter must also be connected to the same earth connection.

Figure 4



**BOTTOM DRAIN VALVE**

Make sure the bottom drain valve is closed.

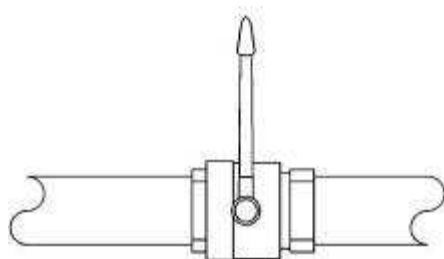
SUCTION PIPE

Make sure that the on-off valve is open.

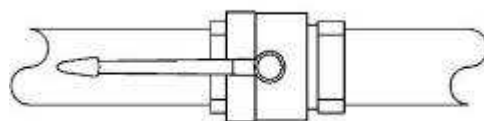
N.B. the on-off valves:

- are closed when the lever is perpendicular to the pipeline;
- are open when the lever is in line with the pipeline.

Figure 5



CLOSED



OPEN

THE DIESEL TANK IS READY FOR FILLING.

4.4**SAFETY CHECK VALVE - VRL 10**

This 1" check valve is fitted with a spring calibrated at 0.25 bar and is placed in line with the suction pipe, between the cut-off cock and the pump dispenser suction pipe.

The purpose of this valve is to keep the pressure below that in the suction pipe, allowing fuel to flow only when the pump is in the suction stage.

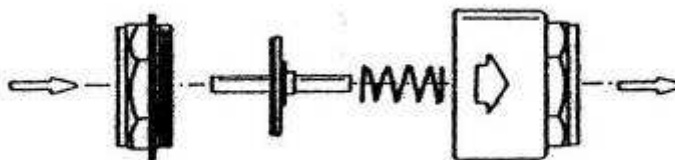
The valve is not fundamental for plant operation, it simply offers greater safety given that the pump unit has a resistance to pressure well above the maximum pressure exerted by the liquid on the suction pipe when the tank is full.

4.5**CHECK VALVE MAINTENANCE - VRL 10**

In the case of malfunctioning or deposit of impurities on the valve VRL 10, proceed as follows:

- unscrew the valve so that it separates into two pieces;
- clean and if necessary replace the spring;
- reassemble, taking care to replace the inside washer and spring correctly so as not to obstruct fuel flow.

Figure 6

**4.6****ROUTINE MAINTENANCE****TANK**

The tank only requires periodic cleaning inside, the frequency depending on the quality of the product stored. No special maintenance is necessary.

The suction pipe is raised by about 12 - 13 cm to leave sufficient space to collect bottom sediment.

N. B.

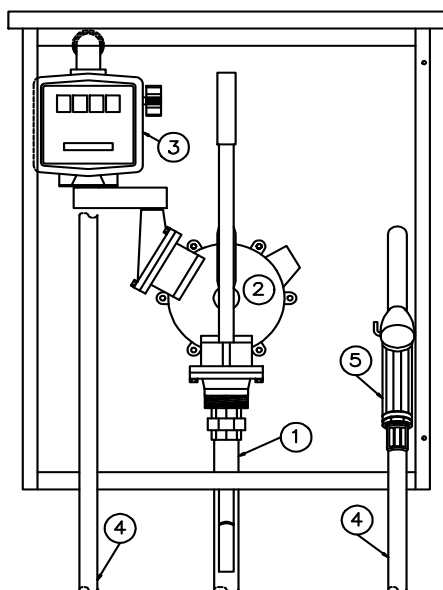
SHOULD IT BE NECESSARY TO ENTER THE TANK, IT MUST BE COMPLETELY EMPTY WITH SUFFICIENT VENTILATION INSIDE THE TANK TO PREVENT HARMFUL GAS INHALATION; IN ANY CASE AN ANTI-GAS MASK AND EXTERNAL ASSISTANCE MUST BE PROVIDED.

5.1
PUMP DISPENSERS
SIZE AND WEIGHT

MODEL	PUMP TYPE	FLOW RATE litres/min.	LITRE-COUNTER	SIZE mm	WEIGHT kg
G. E.	N/A	/	/	/	/
X	N/A	/	/	/	/
Box M K	Hand	50	K 33	580 X 700 X 720	40
Box 5 K	Electric	45	K 33	580 X 700 X 320	43
Box 6 K	Electric	45	K 33	580 X 700 X 320	43
Box 8 K	Electric	70	K 33	580 X 700 X 320	49
Box 10 K	Electric	90	K 33	580 X 700 X 320	50
Box 4 K cc.	Electric	40	K 33	580 X 700 X 320	45
Box 9 K cc.	Electric	60	K 33	580 X 700 X 320	50
Cube CK 50	Electric	45	K 33	310 X 300 X 285	17
Cube CK 70	Electric	70	K 33	310 X 300 X 285	25
Cube CK 70 MC	Electric	70	K 600	310 X 300 X 285	25
SS 70 TANK K 44	Electric	70	K 44	280 X 360 X 990	57
SS 70 TANK PULSER	Electric	70	K 44	280 X 360 X 990	57
SS 70 TANK MC	Electric	70	K 600	280 X 360 X 990	57
SS 70 TANK FM	Electric	70	K 600	280 X 360 X 990	57
SS 100 TANK K 44	Electric	70	K 44	280 X 360 X 990	65
SS 100 TANK MC	Electric	70	K 600	280 X 360 X 990	65
SS 100 TANK FM	Electric	70	K 600	280 X 360 X 990	65

5.2**DT - O . MK**

(DIESEL TANK - O WITH HAND PUMP)

Figure 7

Metal cabinet 580 x 320 x h 700 with tamperproof door, including:

- ① 1" suction pipe.
- ② double-acting hand diaphragm pump mod. GPI max. capacity 50 l/min.
- ③ litre-counter K 33 for private use, with trip control and progressive total recorder.
- ④ ¾" delivery hose - 19 x 27, 10 bar with push-fit connections.
- ⑤ normal 1" non-drip dispenser nozzle with swivel connection.

5.3**STARTING - M K**

Once the pump-tank has been positioned according to the instructions given under "**GENERAL INFORMATION**" (Sect. 2.1 - Pg. 4) and "**TANK PREPARATION**" (Sect. 4.3 – Pg. 8), and the tank has been earthed, it is advisable to control the following before starting the plant:

- ensure that the suction pipe on-off valve is open (Sect. 4.3 / pg. 9);
- ensure that the fuel level in the tank is above the level of the suction pipe;
- ensure that the connections are perfectly tight.

5.4**OPERATION - M K**

The high-capacity hand diaphragm pumps used in the DT-O . MK tanks are self-priming and, despite the resistance of the safety check valve, need no initial priming.

It only needs one person to refuel the equipment or vehicle, proceeding as follows:

- put the dispenser nozzle into the tank of the vehicle to be refuelled;
- open the nozzle by pulling the trigger as far as it will go: the nozzle supplied with the plant is fitted with a lock system that automatically keeps the nozzle open;
- operate the pump in alternate directions using the relative lever.

Upon completion of refuelling, just pull on the nozzle trigger to close it.

5.5**M K MAINTENANCE - TROUBLESHOOTING**

The MK pump dispenser is fitted with self-lubricating equipment and generally requires no routine maintenance.

A few problems which could occur over a period of time are listed below.

IF THE PUMP DELIVERS LITTLE:

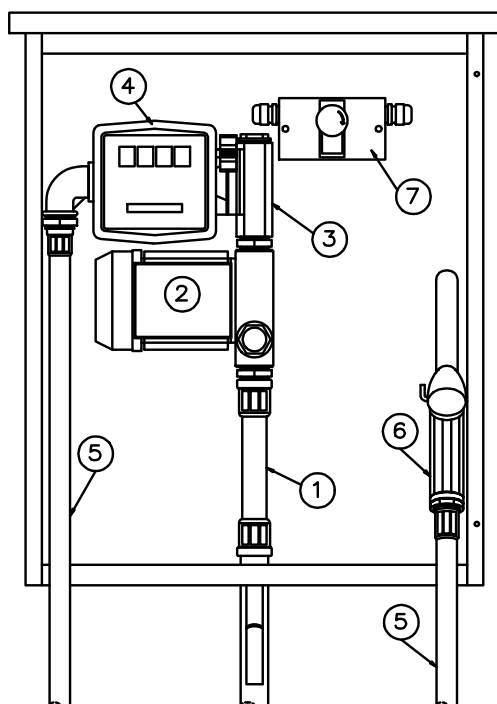
- check the state of the line filter if there is one inside the pump and clean if necessary;
- check the efficiency of the nozzle;
- check the efficiency of the pump diaphragm (xx)(Sect. 9.1 / pg. 26).

IF THE PUMP DOES NOT DELIVER:

- check if the suction valve is closed (Sect. 4.3 - Pg. 9);
- check the fuel level in the tank;
- check the efficiency of the hand pump;
- check the efficiency of the nozzle;
- check the state of the safety check valve (Sect. 4.5 / pg. 10).

6.1
DT - O . 5K (6K)

(DIESEL TANK - O WITH ELECTRIC PUMP 45 (60) L/MIN.)

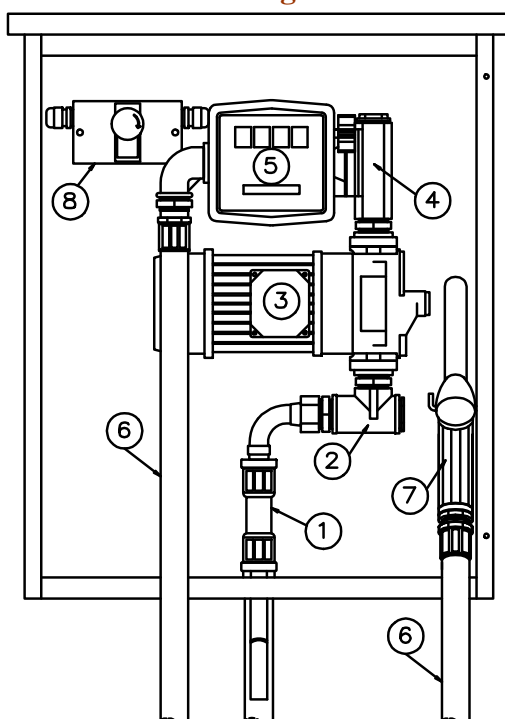
Figure 8


Metal cabinet 580 x 320 x h 700 with tamperproof door, including:

- ① 1" suction pipe;
- ② electric pump E 55 - 45 (60) l/min. with built-in by-pass (Panther) and filter, motor 0.5 HP - 2400 rpm, 220 V single-phase - 50 Hz;
- ③ pump connection – flanged litre-counter for initial priming of the pump;
- ④ litre-counter K 33 for private use, with trip control and progressive total recorder;
- ⑤ 3/4" delivery hose - 19 x 27 / 10 bar with push-fit connections;
- ⑥ automatic dispenser nozzle - 55 l with 1" swivel connection;
- ⑦ overload cut-out in box IP 55, with low voltage coil.

6.2
DT - O . 8K (10K)

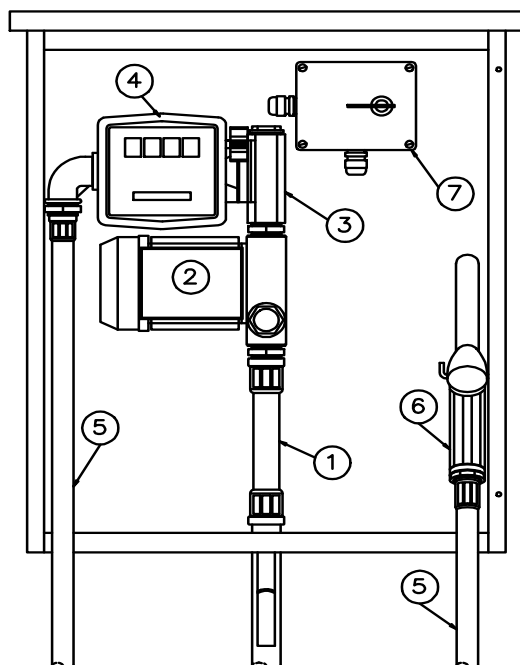
(DIESEL TANK - O WITH ELECTRIC PUMP 70 (100) L/MIN.)

Figure 9


Metal cabinet 580 x 320 x h 700 with tamperproof door, including:

- ① 1" suction pipe;
- ② 1" flanged line filter;
- ③ electric pump 70 (90) l/m, built-in by-pass, motor 0.75 (1) HP – 1400 rpm – 220V single-phase or 380 V three-phase-50 Hz;
- ④ pump connection – flanged litre-counter for initial priming of the pump;
- ⑤ litre-counter K 33 for private use, with trip control and progressive total recorder;
- ⑥ 1" delivery hose - 25 x 35 / 10 bar (1" - 25 x 38 / 20 bar) with push-fit connections;
- ⑦ automatic dispenser nozzle 80 (120) l/min with 1" swivel connection;
- ⑧ overload cut-out in box IP 55, with low voltage coil.

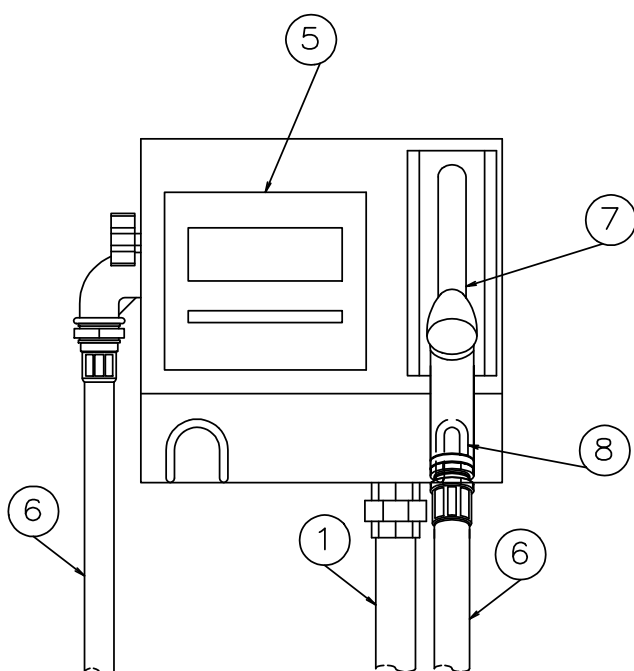
6.3
DT - O . 4 K (9K) dc (DIESEL TANK WITH ELECTRIC PUMP 30 (60) L/MIN. D. C.)

Figure 10


Metal cabinet 580 x 320 x h 700 with tamperproof door, including:

- ① 1" suction pipe;
- ② by-pass electric pump 2000 - 30 (60) l/min, built-in by-pass and filter, DC motor - 2800 rpm, 12 or 24 Vdc;
- ③ pump connection - flanged litre-counter per initial priming of the pump;
- ④ litre-counter K 33 for private use, with trip control and progressive total recorder;
- ⑤ 3/4" delivery hose - 19 x 27 / 10 bar (1" - 25x35) with push-fit connections;
- ⑥ automatic dispenser nozzle - 55 (60) l with 1" swivel connection;
- ⑦ switch box IP 55 with rotary switch (battery cutout) and fuse 50 A dc provided.

6.4
DT - O . CK (DIESEL TANK - O WITH MINI PUMP DISPENSER 45 L/MIN.)

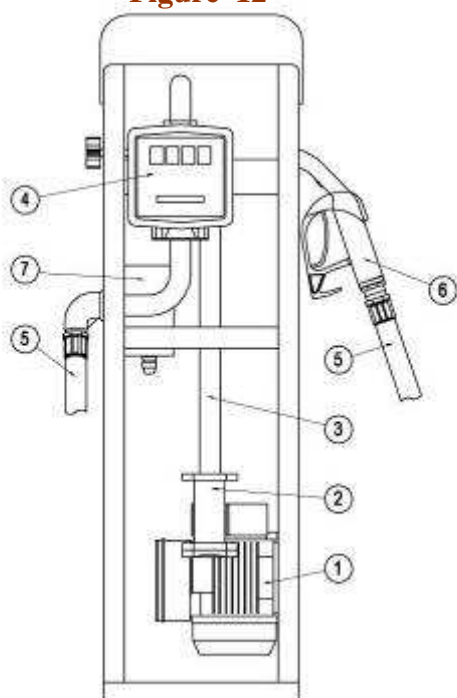
Figure 11


Mini pump dispenser 310 x 300 x 285 with housing in painted sheet metal, including:

- ① 1" suction pipe;
- electric pump E 55 - 45 l/m, built-in by-pass and filter, motor 0.55 HP - 2,800 rpm 220 V, single-phase - 50 Hz;
- ⑤ litre-counter K 33 for private use, with trip control and progressive total recorder;
- ⑥ 3/4" delivery hose - 19 x 27 / 10 bar with push-fit connections;
- ⑦ automatic dispenser nozzle 55 l with 1" swivel connection;
- ⑧ nozzle holder with built-in pump start-stop limit switch.

6.5
DT - O . SS 70 (100) TANK K44

PUMP DISPENSER 70 (90) L/MIN

Figure 12


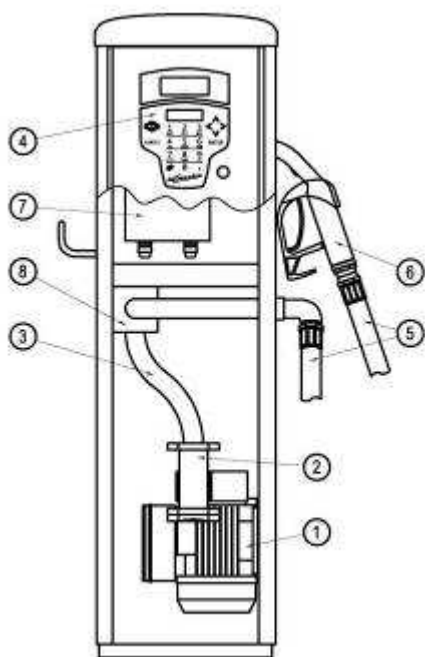
Pump dispenser 280 x 360 x h 990 mm, including:

- 1½" suction pipe;
- ① electric pump 70 (90) l/min, built-in by-pass. motor 550 (750) W;
- ② 1" flanged line filter;
- ③ pump - litre-counter connection pipe;
- ④ litre-counter K 44 for private use, with trip control and progressive total recorder;
- ⑤ 1" delivery hose - 25 x 35 / 10 bar with push-fit connections;
- ⑥ automatic dispenser nozzle 80 (120) l/min with 1" swivel connection;
- ⑦ switch box IP 55.

* The **Pulser** version is fitted with pulse emitter for connection to a fuel management system.

6.6
DT - O . SS 70 (100) TANK MC/FM

PUMP DISPENSER 70 (90) L/MIN

Figure 13


Fuel pump 280 x 360 x h 990 mm, including:

- 1½" suction pipe;
- ① electric pump 70 (90) l/min, built-in by-pass, motor 550 (750) W;
- ② 1" flanged line filter;
- ③ pump - litre-counter connection pipe;
- ④ digital pulser litre-counter K 600 for private use, capacity to manage several users, local storage up to the last 255 deliveries;
- ⑤ 1" delivery hose - 25 x 35 / 10 bar with push-fit connections;
- ⑥ automatic dispenser nozzle 80 (120) l/min with 1" swivel connection;
- ⑦ switch box IP 55.

7.1

ELECTRICAL CONNECTION WITH CONTROL UNIT ACP 3.2 FOR DISPENSER BOXES 5K - 6K - 8K - 10K



DESCRIPTION:

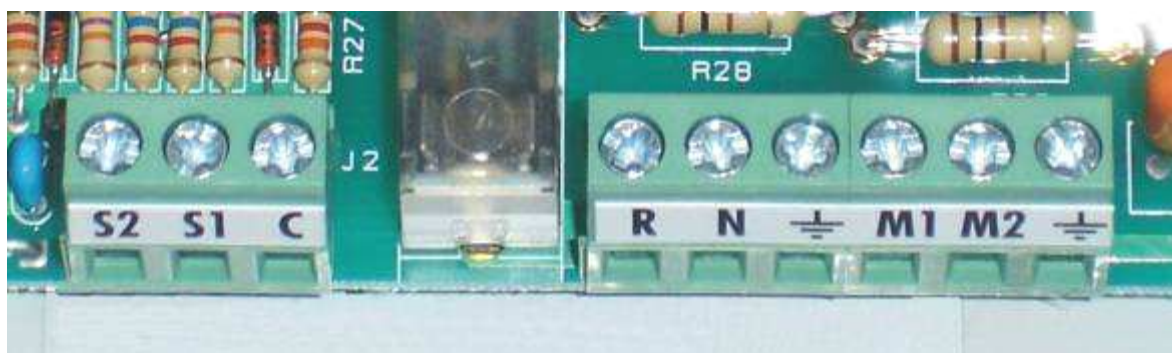
- 1 – Plastic screws for opening/closing the ACP 3.2 unit
- 2 – “Power” indicator light
- 3 – Full tank indicator light (operative with self-filling version);
- 4 – Low fuel warning light (blinking light operative with version connected to float switch);
Low fuel warning light (fixed light operative with version connected to float switch);
- 5 – “Pump on” indicator light;
- 6 – Start-Stop button;
- 7 – Cable gland power cable inlet (min. 3x1.5 mm²);
- 8 – Cable gland pump power cable outlet;
- 9 – Cable gland outlet: - pressure switch cable (standard layout);
- level control equipment power cable, additional;
- float switch cable;


POWER SUPPLY :


To power the ACP 3.2 and therefore the dispenser pump, loosen the screws marked in the above figure with the number 1, remove the cover and turn it over.



Identify the connection terminal block, a blow-up of which can be seen below and connect the cables as described:




M1 – M2 Pump power supply terminal block PHASE - NEUTRAL (already connected)
 Pump earth connecting terminal (already connected)

R – N Power supply connecting terminals 230 [V] 50-60 [Hz] PHASE -NEUTRAL
 Power supply earth wire connecting terminal

N.B.:



In the versions with additional equipment (INTELLILEVEL - OCIO - etc.), even though the terminals R - N  will appear occupied by the secondary equipment power cable, the main power cable must in all circumstances be connected to the above-mentioned terminals in parallel to the power cable of the secondary equipment.

7.2

ELECTRICAL CONNECTION WITH OVERLOAD CUTOUT FOR DISPENSER BOXES 5K - 6K - 8K - 10K

The pump dispensers 5K - 6K - 8K and 10K are fitted with overload cutout in an IP 55 rated box with low-voltage coil 220 V (if single-phase) or 380 V (if three-phase) and are to be electrically connected using suitably sized flameproof cable protected upstream by a thermomagnetic residual current circuit breaker and in any case in conformity with current C E I regulations.

Start: press the button - **I** **Stop:** press the mushroom-head button - **0** -

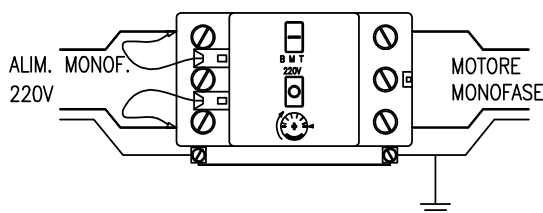
N.B.: The low-voltage coil does not allow the overload cutout to operate unless powered by mains voltage, giving the impression of malfunction if an attempt is made to activate it without power.

- The mushroom-head stop button may be fitted (for greater safety) with a locking device with release by rotation.

To release the button, turn it clockwise as shown by the arrow on the button head.

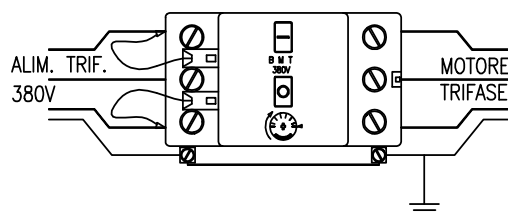
SINGLE-PHASE POWER SUPPLY 220V

Figure 14



THREE-PHASE POWER SUPPLY 380V

Figure 15



7.3

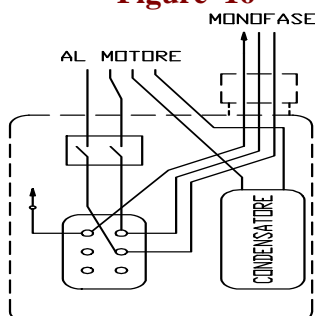
ELECTRICAL CONNECTION FOR MINI PUMP DISPENSER CUBE - CK.

The mini pump dispensers CUBE - CK, normally supplied in the single-phase 220V version, are just fitted with a thermal cutout inside the motor and a thermomagnetic circuit breaker must therefore be installed upstream on the supply line in accordance with the requirements of current CEI regulations (overload cutout, cable section, etc.)

Start: push the nozzle support lever inwards **Stop:** pull the nozzle support lever outwards

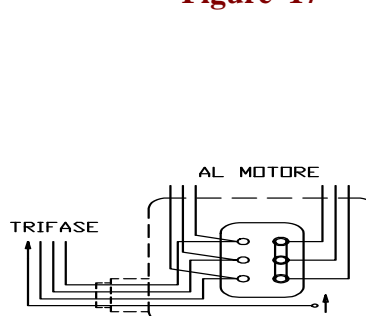
SINGLE-PHASE MOTOR 220 V.

Figure 16



THREE-PHASE MOTOR 380 V.

Figure 17



7.4

ELECTRICAL CONNECTION

FOR PUMP DISPENSER SS 70 - SS 100.



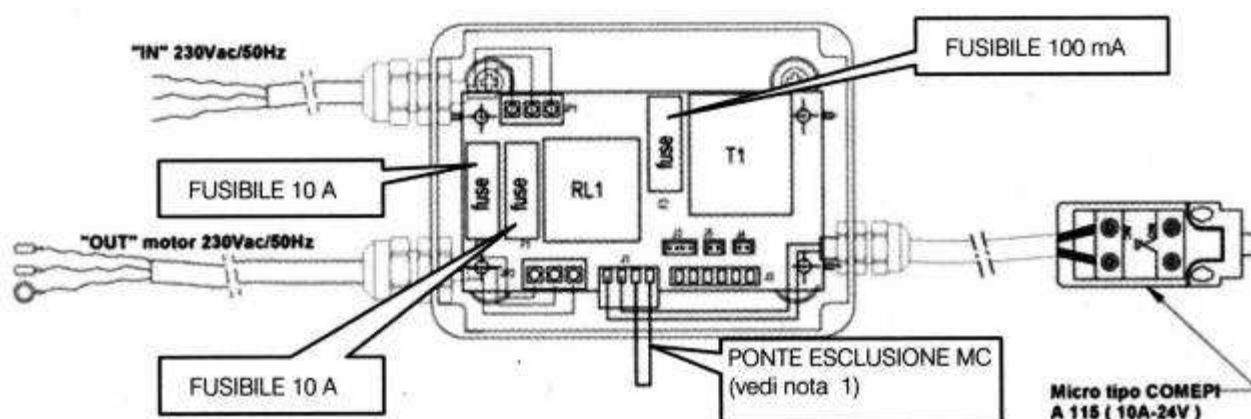
The switch boxes of the SS pump dispensers are fitted internally with fuses; the supply line must be protected upstream by a thermomagnetic circuit breaker in compliance with the requirements of current CEI regulations (overload cutout residual current device, cable section, etc.)

Start: raise the switch (*it can only be moved when the nozzle has been removed from the holder*) to the ON position.

Stop: put the switch back to the OFF position (*by hand or by replacing the nozzle in the nozzle holder*).

The electrical gear, which can be accessed by opening the front panel, is already wired to the dispenser parts as shown in the block diagram in Figure 18.

Figure 18



Note 1: If the level gauge is to be inserted inside the tank, replace the MC cut-out jumper with a closed microswitch.

7.5

ELECTRICAL CONNECTION

FOR DISPENSER BOX 4 K - 9 K DC

The 4Kdc and 9Kdc switch boxes are normally provided with cables and connecting plug, which must be connected with relative socket to the battery of the equipment in compliance with current legislation.



N.B.: check that the supply voltage corresponds to the motor voltage 12 or 24 V dc.

Start - Stop turn the selector switch (battery cut-out) on the switch box.

POSITIVE	+	RED
NEGATIVE	--	BLACK

N.B.: the positive wire inside the switch box is fitted with a fuse.

7.6
STARTING

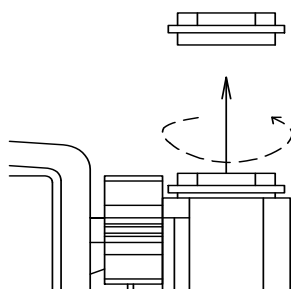
ALL MODELS (MK EXCLUDED)

Once the pump-tank has been positioned according to the instructions given under "**GENERAL INFORMATION**" (Sect. 2.1 - pg. 4) and "**TANK PREPARATION**" (Sect. 4.3 - pg. 8), the tank has been earthed and the pump electrically connected, it is advisable to carry out the following checks before starting the plant:

- check that the mains voltage corresponds to the motor voltage;
- check the direction of rotation of the motor if three-phase or operating with direct current;
- make sure that the suction pipe on-off valve is open (Sect. 4.3 / pg. 9);
- make sure that the fuel level in the tank is above that of the suction pipe.
- make sure that the connections are perfectly tight, including the filter cap.

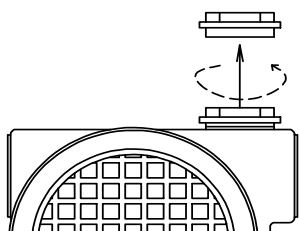
The tank is ready for use.

Due to the calibrated check valve, even though the dispenser pump is self-priming it may be necessary when starting up for the first time to prime the pump as follows:

Figure 19


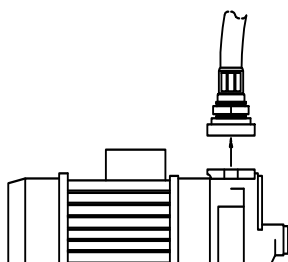
Mod. 5K - 6K - 8K - 10K - 4Kdc - 9K dc

through the 1" cap of the pump - litre-counter connection.

Figure 20


Mod. C K 50 / C K 70

through the 1" cap of the pump filter.

Figure 21


Mod. SS 70 - SS 100 - MC 30

through the flange fitting between the pump and the litre-counter connecting pipe.

7.7

OPERATION

All models (MK excluded)

When the pipes and various parts of the pump are being primed, air bubbles may form which disturb the flow; it is therefore advisable to prolong first delivery until all the air has been eliminated.

This can be helped by repeatedly opening and closing the dispenser nozzle.

After having dispensed a sufficient amount of fuel, shut off the nozzle and leave the pump in the by-pass mode of operation.

Check for and eliminate any leaks.

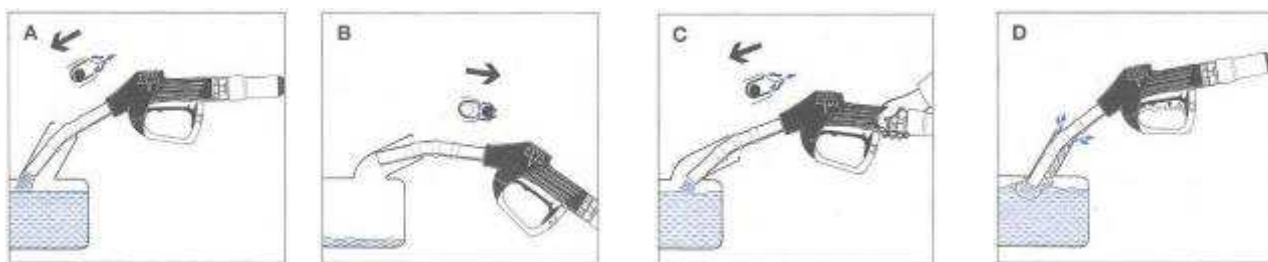
The dispenser nozzle is the automatic type and therefore stops operating upon completion of filling.

Leave the nozzle to drip for a moment and stop the pump by pressing the mushroom-head button - 0 - of the overload cutout (5 - 6 - 8 - 10K) or by turning the selector switch (4Kdc), then rewind the hose and replace the nozzle in its support.

In the CK version it is sufficient to just replace the nozzle in its support.

It is recommended that the spout of the nozzle be kept pointing downwards or at the most in a horizontal position during dispensing, otherwise the nozzle trips before the tank is full.

Figure 22



N.B.



Due to the safety check valve, there is a minimum over-pressure inside the hydraulic circuit equivalent to the pump by-pass pressure when the dispenser unit stops. Whenever the installation is not used for a long time, it is advisable to release the internal over-pressure by opening the automatic nozzle without the pump being put into operation.

7.8

PUMP DISPENSER ROUTINE MAINTENANCE

The Box pump dispenser has self-lubricating parts and generally requires no routine maintenance, except for the suction pump filter and the nozzle filter.

It is, however, advisable to schedule periodic maintenance of the pump unit once every six – twelve months to check that it is operating correctly and to check the various parts for wear such as the impeller blades, to check seals/gaskets and nipples, ageing of hoses, etc.



CLEANING THE PUMP FILTER

- unscrew the filter cap;
- remove the stainless steel mesh and clean with Diesel oil and compressed air;
- refit all the parts making sure that the cap gasket is inserted;
- ensure that the cap is perfectly tight.

Figure 23



N. B. :



If the pump dispenser is fitted with a ZVA automatic nozzle (capacities 70 and 100 l/min.), the filter installed on this type of nozzle between the nozzle body and the swivel must be cleaned periodically.

CLEANING THE ZVA NOZZLE FILTER

- unscrew the swivel from the nozzle body;
- remove the nylon filter and clean with Diesel oil and compressed air;
- refit all the parts, inserting the appropriate gasket.

Figure 24



7.9

TROUBLESHOOTING

A few problems which could occur over a period of time are listed below.

IF THE PUMP DELIVERS LITTLE or BADLY:

- check the condition of the filters (pump and nozzle) and clean if necessary (Sect. 7.7 / pg. 21);
- check the pump by-pass, unscrew the cap and replace the spring if broken (Sect. 9.2 / pg. 27 onwards);
- check the condition of the pump vanes and if necessary replace them (Sect. 9.2 / pg. 27 onwards).

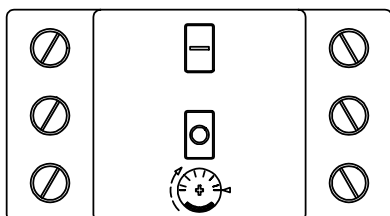
IF THE PUMP TURNS BUT DOES NOT DELIVER:

- check if the suction valve is closed (Sect. 4.3 / pg. 9);
- check if the pump is primed or not; if necessary prime according to instructions (Sect. 7.5 / pg. 19);
- check if the pump takes in air and eliminate any leaks;
- check the condition of the safety check valve (Sect. 4.5 / pg. 10);
- check the vanes for wear and if necessary replace them (Sect. 9.2 / page 27 onwards).

IF THE ELECTRIC MOTOR DOES NOT WORK:

- check whether the current arrives or not at the terminals on the overload cutout.
- check the overload cutout, raise the calibration of the cut-out and replace if necessary (5 - 6 - 8 - 10K).

Figure 25



NB: CAUTION: LIVE EQUIPMENT

before taking the cover off the overload cutout, CUT OFF the electricity supply by putting the switch upstream of the power supply line to the “off” position.

- check the fuse in the switch box (4Kdc and 9Kdc)
- check if the pump impeller is locked and release if necessary.
- check the electric motor and rewind if necessary.

Contact our offices for any other malfunction.

7.10

LITRE-COUNTER CALIBRATION

The litre-counter is calibrated in the testing centre for the dispensing of Diesel oil.

Any inaccuracy exceeding 1.5 - 2 % (percentage allowed for private use), may be due to various factors and can be corrected through the calibrating screw located at the side of the outlet connection as described below.

Fully unscrew the cap and proceed as follows:

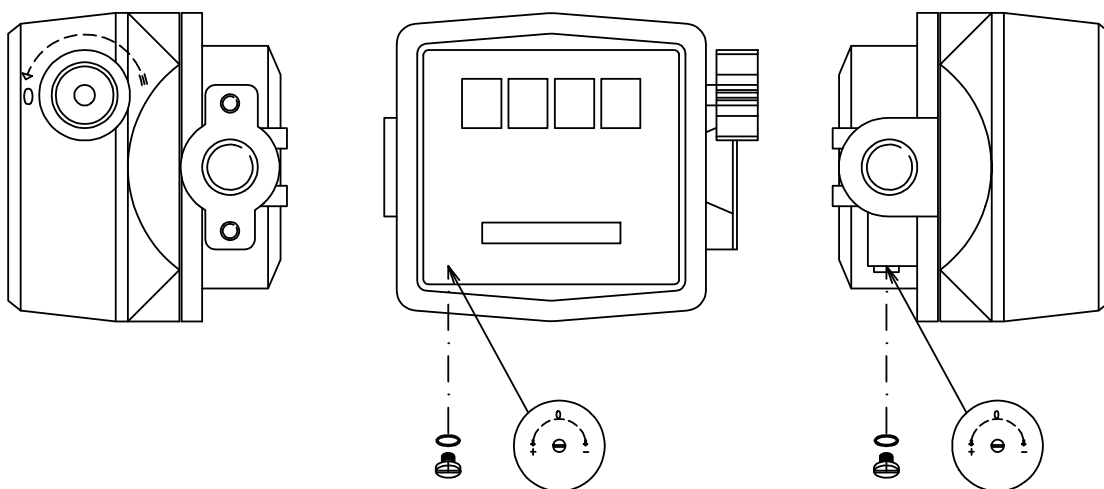
- A) the indicated quantity of liquid is less than the real quantity:
tighten the adjusting screw until correct calibration is reached.
- B) the indicated quantity of liquid is more than the real quantity:
loosen the adjusting screw until correct calibration is reached.

N.B.



Adjustment must be done gradually by quarter-turns.

Figure 26



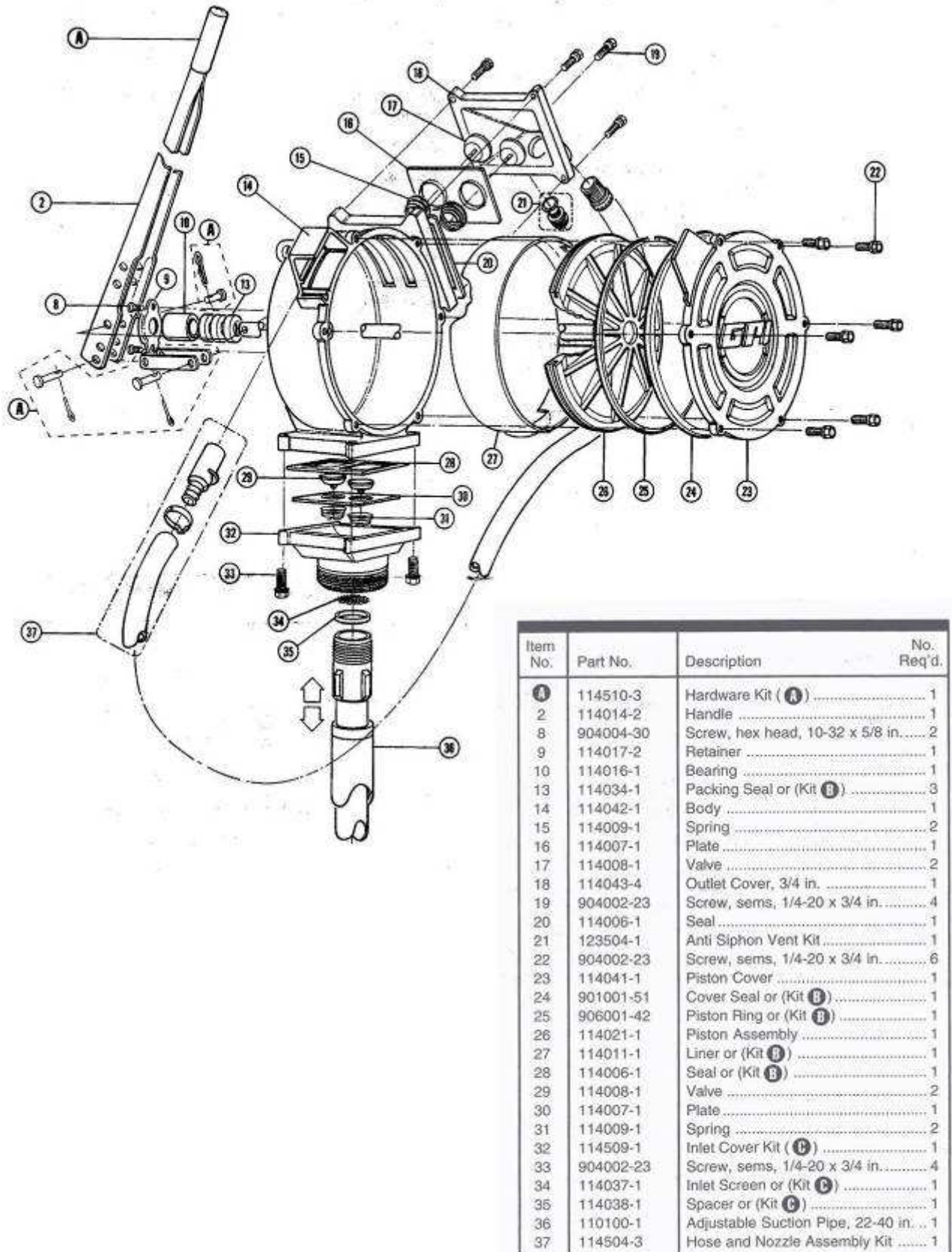
8.1**SPARE PARTS - DT O**

TANKS

Code	Page	Section	Position	No.	Description
RD 008650	6	4.1	1	1	3" inlet head cover- brass
RD 008668	6	4.1	1	1	3" inlet head ring nut- brass
RD 009238	6	4.1	2	1	3" inlet pressure-relief valve - coupling Al
RD 008697	6	4.1	3	1	1½" end-of-line flame arrester
RT 0088M	6	4.1	4	1	Float gauge - 200 cm
IS 950375	7	4.1	8	1	Ball valve - PT 1" FF
AM 10030	7	4.1	9	1	Check valve VRL 10 1" - brass
AM 10031	10	4.4	-	-	Spring for VRL 10

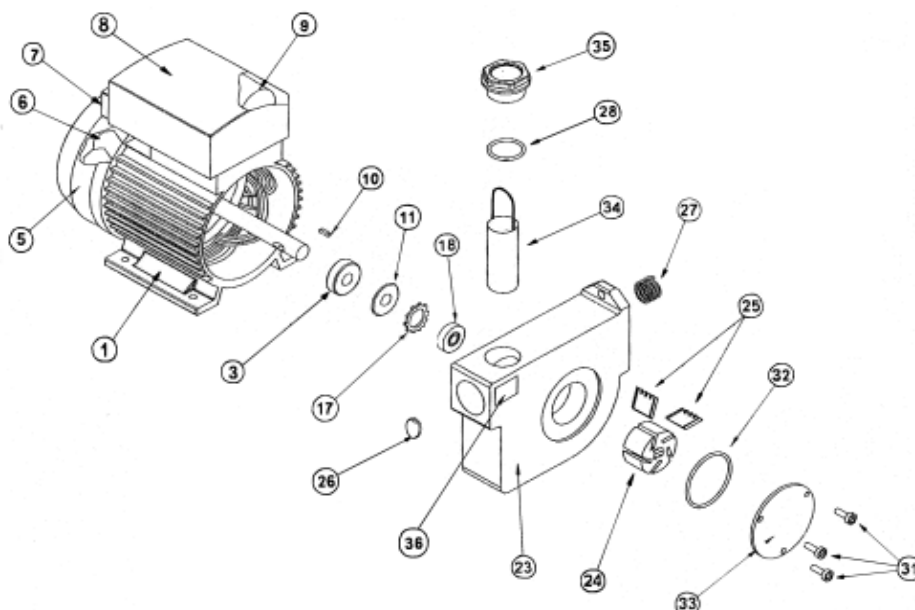
8.2
SPARE PARTS - DT O
DISPENSER UNITS

Code	No.	Description	Pump dispenser type							
			M k	5 k	8 k	10k	4 k cc	C k	SS 70	SS 100
100038	1	Box cabinet	X	X		X	X			
100294	1	Box E80 cabinet			X					
101926	1	Pipe stand 19x27	X	X			X			
100426	1	Oil-res. grommet D 22.5 x Box	X	X	X	X	X			
100427	1	Oil-resist. pipe guide D 43 x Box	X	X	X	X	X			
100042	4	Vib. isol. mountings 20x15 - M6		X	X	X	X			
100068	1	Hand pump GPI			X	X				
	-	Spare parts hand pump GPI								
100065	1	Mot. pump By-pass 2000 12Vdc					X			
100065	1	Mot. pump By-pass 2000 24Vdc					X			
	-	Spare parts for pump B-P 2000								
100249	1	Motor pump E55 - 45 l M 220 V		X				X		
	-	Spare parts for pump E55								
100058	1	Motor pump E80 - 70 l M 220 V			X				X	
100058-1	1	Motor pump E80 - 70 l T 380 V			X				X	
	-	Spare parts for pump E80								
100062	1	Motor pump E120-100l M 220V				X				X
100062-1	1	Motor pump E120-100l T 380V				X				X
	-	Spare parts for pump E120								
100048	1	Litre-counter K33	X	X	X	X	X	X	X	X
	-	Spare parts for litre-counter K33								
100046	1	AMA Al pump-litre-c. connect.		X	X	X	X			
100735	1	Litre-counter connection O-ring		X	X	X	X			
100032	1	1" connection plug		X	X	X	X			
100734	1	1" plug O ring		X	X	X	X			
100049	x m	Pipe H K ¾" 19 x 27 - 10b	X	X			X	X	X	
100055	x m	Pipe H K 1" 25 x 35 - 10b			X					X
100050	1	Normal nozzle 60 l	X							
100069	1	Automatic nozzle 55 l Self 2000		X			X	X		
100056	1	Automatic nozzle 80 l			X				X	
100063	1	Automatic nozzle 120 l				X				X
101113	2	Cable gland PG 16 x overload cutout box		X	X	X				
100043	1	Switch box ACP 3.2								
100140	1	Battery cut-out 35 A dc					X			
100720	1	Sealed box with circuit breaker					X			
100141	1	Fuse holder w/fuse dc 50 A					X			
100044	1	Pressure switch		X	X	X	X	X	X	X

9.1
DETAILS OF PUMP G P I :
Figure 27


9.2
PUMP DETAILS:

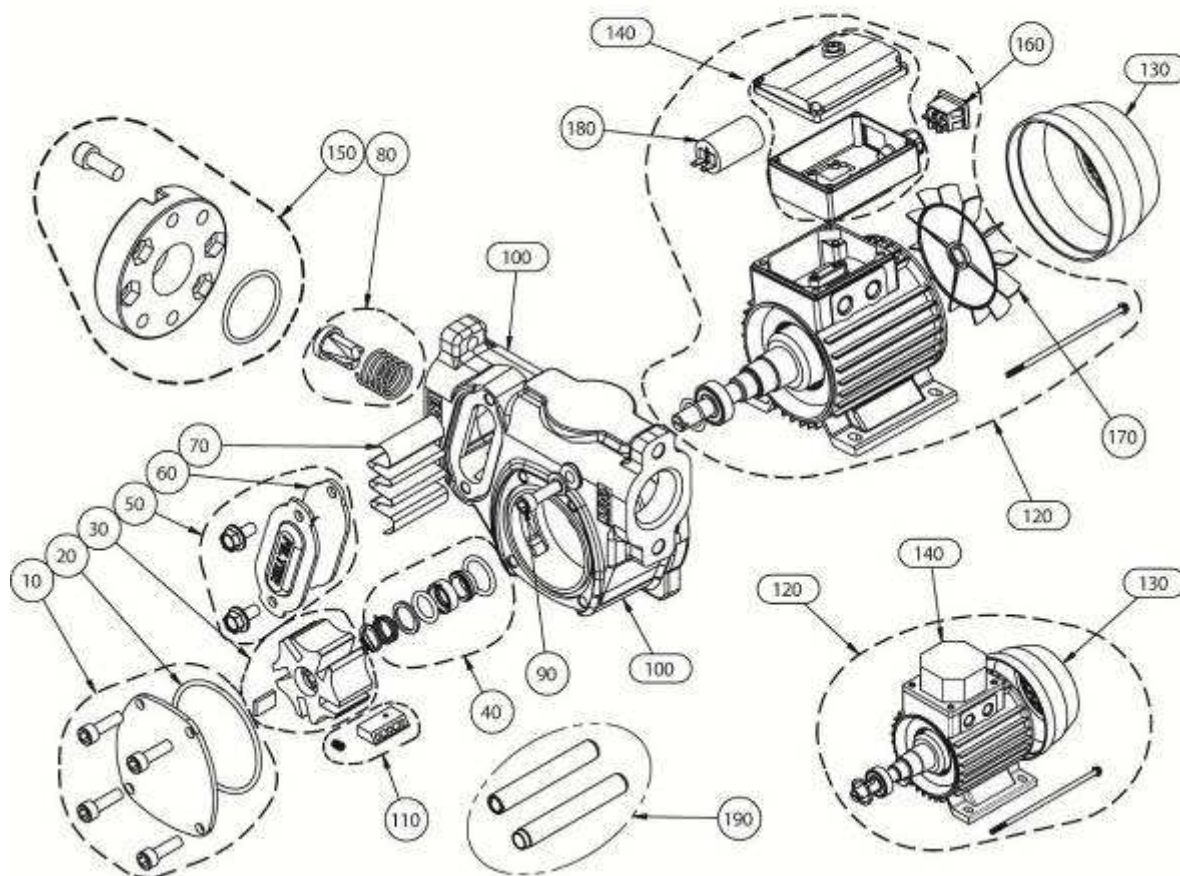
EXPLODED VIEW: BY PASS 55

Figure 28


Pos	Description	Code	No. Req'd
3	Bearing 6201 2ZR	007562000	1
5	Fan cover	008535000	1
6	Fan	008534000	1
7	Double-pole switch COMELUX 4010 I 3502 B01	00766700A	1
8	Box terminal block	00819500A	1
9	Capacitor 12.5 microF	008533000	1
10	Key 3x3x12	009077000	1
11	Wave washer (Øo 31, Øi 26.5 th. 0.4)	009754000	1
23	Pump casing	008531000	1
24	Motor impeller	009001000	1
25	Vane	007929000	5
26	By-pass valve	007927000	1
27	By-pass tapered spring	008114000	1
28	O ring 3118 (Ø29.62 th. 2.62)	007025000	1
31	Hex socket head screw Uni 5931 8.8 M5x8	008116000	3
32	O ring 3206 (Ø52.07 th. 2.62)	008245000	1
33	Front cover	008121000	1
34	Filter	008113000	1
35	1" filter cap	007026000	1
36	Filter rating plate	008120000	1
MOTOR		008524000	1
1	Motor stator		1
2	Motor impeller		1
3	Bearing 6201 2ZR	X	1
5	Fan cover	X	1
6	Fan	X	1
7	Double-pole switch COMELUX 4010 I 3502 B01	X	1
8	Terminal block	X	1
9	Capacitor 12.5 microF	X	1
10	Key 3x3x12	X	1
11	Wave washer (Øo 31, Øi 26.5 th. 0.4)	X	1
SEAL KIT		009721000	
17	Orientation ring ZJ 28		1
18	Seal BABSL 10/26/7 in Viton		

9.3
PUMP DETAILS:

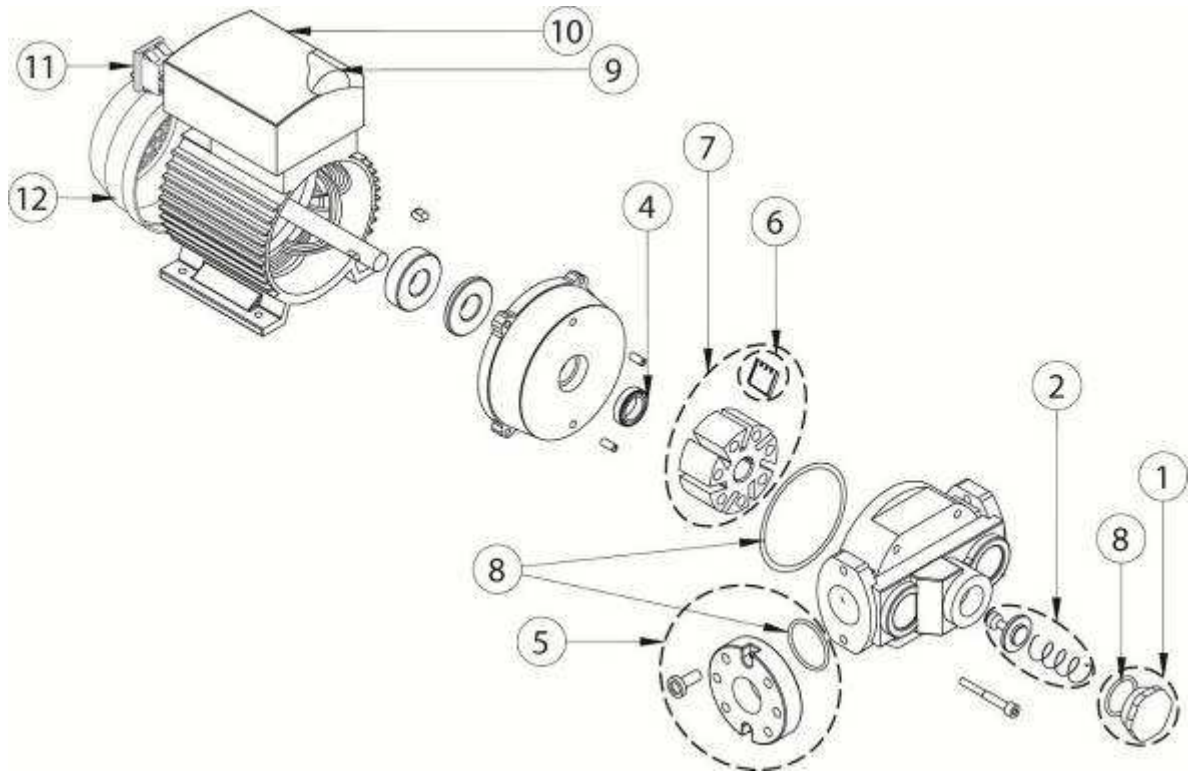
EXPLODED VIEW: PANTHER 56/72

Figure 29


Pos.	Description	Code	No. Req'd
10	CHAMBER COVER KIT	R10361000	1
20	CHAMBER COVER GASKET	R11461000	1
30	KEY+IMPELLER KIT PANTHER DC	R13282000	1
40	MOTOR SHAFT SEAL KIT PANTHER 56\72	R11737000	1
50	FILTER COVER KIT	R10360000	1
60	FILTER COVER GASKET	R1036200A	1
70	FILTER KIT PANTHER	R10363000	1
80	BY-PASS KIT	R10515000	1
90	ANTI-SIPHON KIT	R11702000	1
100	CIRCULAR PUMP CASING (P56) CIRCULAR PUMP CASING (P72)	R11759000 R1051300B	1 1
110	5 VANES + 5 SPRINGS KIT	R11276000	1
120	MOTOR 0.5 HP (P56) KIT MOTOR 0.7 HP (P72) KIT	R1036700A R10451000	1 1
130	MOTOR 0.5 HP FAN COVER KIT	R08535000	1
140	BOX TERMINAL BLOCK PANTHER 56\72	R12746000	1
150	FLANGE KIT	R09180000	1
160	DOUBLE-POLE SWITCH COMELUX MD 4010 I 3502 B01	R07667000	1
170	0.5 HP MOTOR FAN KIT	R08534000	1
180	CAPACITOR KIT 16uF MOTOR 0.7 HP	R08193000	1
190	MECHANICAL SEAL REPLACE. TOOL KIT	R12799000	1

9.4
PUMP DETAILS:

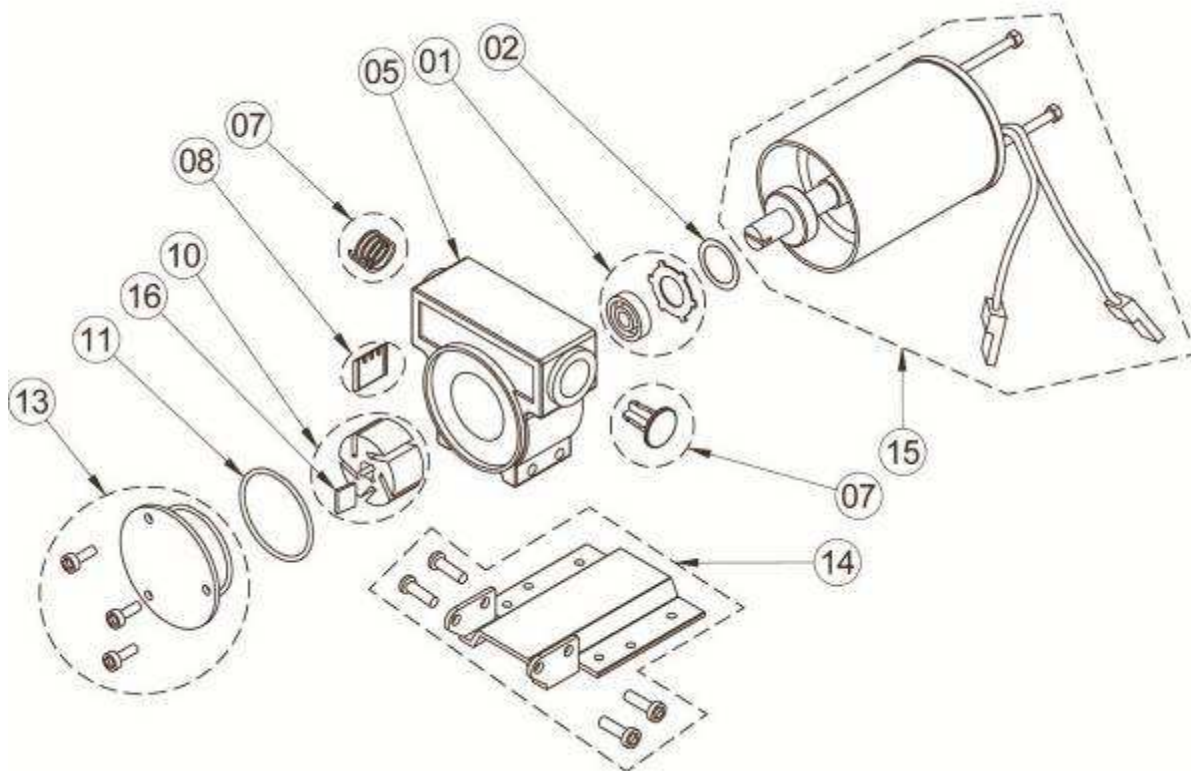
EXPLODED VIEW: E 80 / 120

Figure 30


Pos.	Description	Code	No. Req'd
1	PLUG ASSEMBLY 1G + GASKET	R13851000	1
2	BY-PASS VALVE KIT	R10912000	1
3	SEAL KIT BABSL 20/30/7 IN VITON	R08772000	1
5	FLANGE KIT	R09180000	1
6	7 VANES E80/E120/S120 KIT	R0700200A	1
7	IMPELLER WITH VANES (E80) KIT	R0743200A	1
	IMPELLER WITH VANES (E120) KIT	R0785400A	1
8	O-RING KIT	R12846000	1
9	CAPACITOR KIT 16uF MOTOR 0.7 HP (E80)	R08193000	1
	CAPACITOR KIT 25uF MOTOR 1 HP (E120)	R08194000	1
10	BOX TERMINAL BLOCK KIT 0.5/0.7HP 230/50 (E80)	R0819500A	1
	BOX TERMINAL BLOCK 1HP 230V/50HZ (E120)	R0819600A	1
11	DOUBLE-POLE SWITCH COMELUX MD 4010 I 3502 B01	R07667000	1
12	MOTOR FAN COVER MEC71 (E80)	R08181000	1
	FAN COVER MEC 80 (E120)	R08182000	1

9.5
PUMP DETAILS:

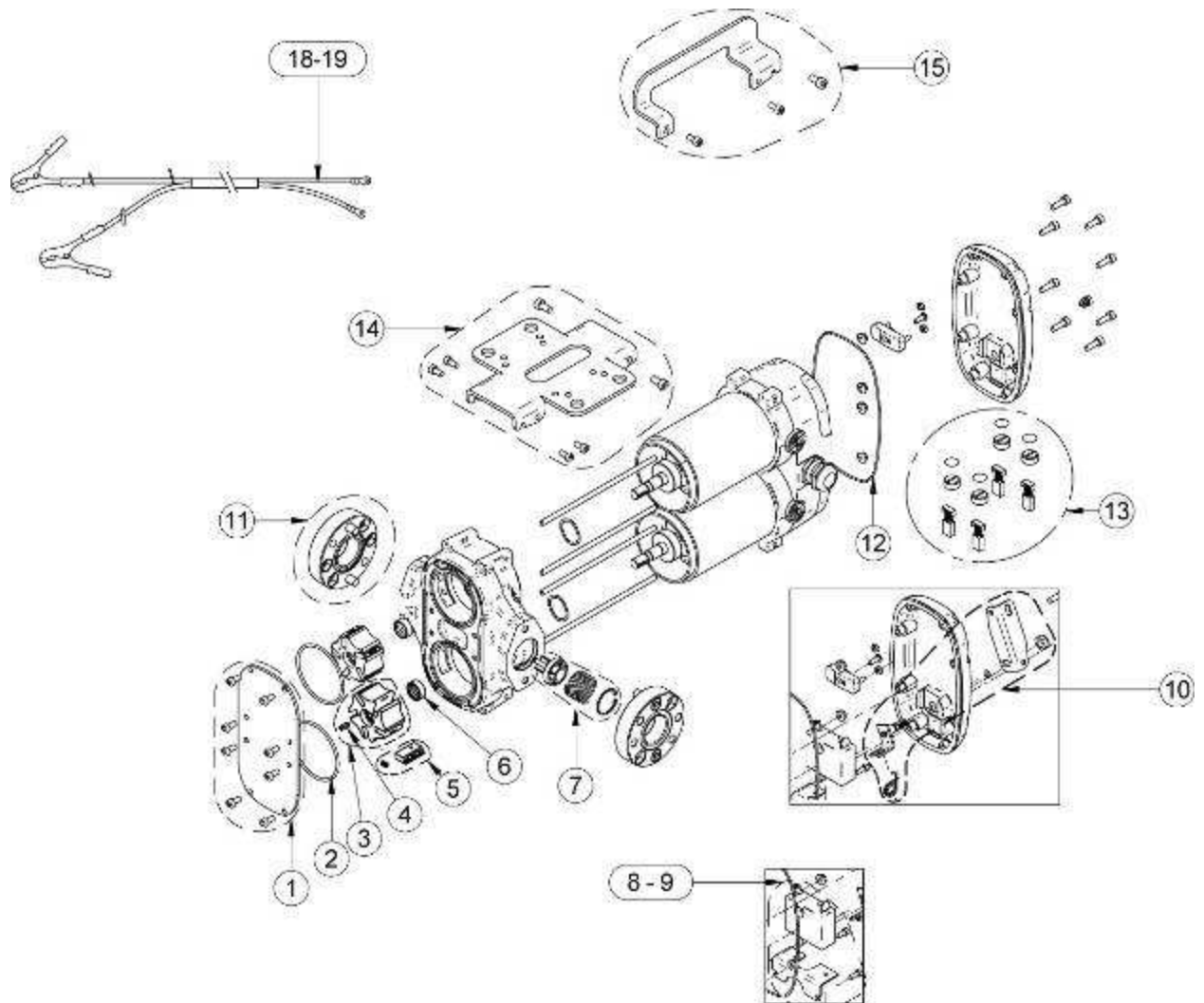
EXPLODED VIEW: BY PASS 2000 – 12/24 V.CC.

Figure 31


Pos.	Description	Code	No. Req'd
1	SEAL KIT BP2000	R09719000	1
2	WAVE WASHER	R09753000	1
5	PUMP CASING BP2000	R0828000C	1
7	BY-PASS VALVE KIT	R11789000	1
8	5 VANES KIT	R07929000	1
10	IMPELLER + KEY KIT	R12901000	1
11	O RING 3206 NBR 70SH	R08245000	1
13	FRONT COVER KIT	R12900000	1
14	PUMP BASE EQUIPMENT KIT	R09224000	1
15	MOTOR 12V KIT COMPLETE WITH STAY RODS (12 V)	R12530000	1
	MOTOR 24V KIT COMPLETE WITH STAY RODS (24 V)	R12531000	1
16	KEY 13.6x12x2 METAL ZN (25pcs)	R12667000	1

9.6
PUMP DETAILS:

EXPLODED VIEW: BIPUMP – 12/24 V DC

Figure 32


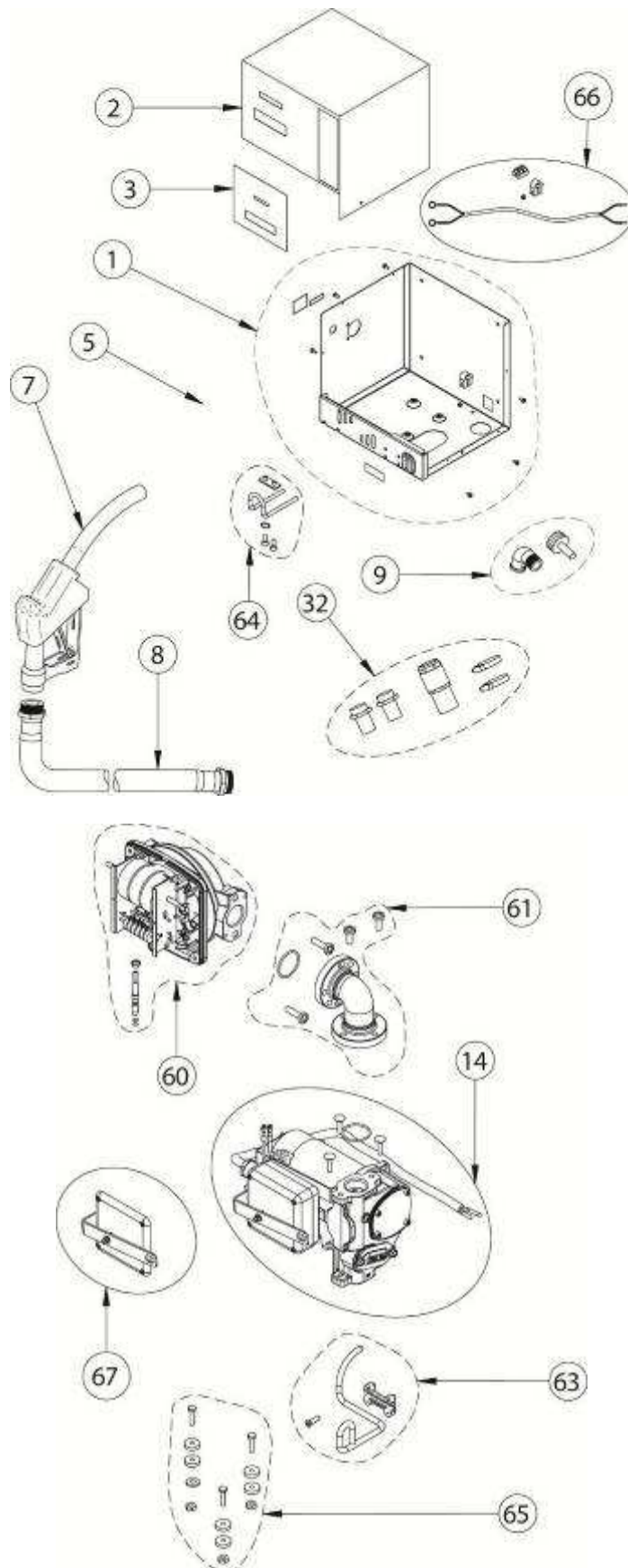
Pos.	Description	Code	No. Req'd
1	BI-PUMP CHAMBER COVER	R0989300A	1
2	O RING KIT 3237 NBR 70 SH (10 PCS.)	R09963000	1
3	IMPELLER+KEY KIT PANTHER DC	R13282000	1
4	KEY KIT PANTHER DC	R13285000	1
5	10 VANES 13.72x5.8x25 KIT	R11287000	1
6	SEAL (i.d.11/o.d.19/th.7)	R10132000	1
7	BI-PUMP BY-PASS VALVE	R1269500A	1
8	BI-PUMP 12V SWITCH KIT	F13959000	1
9	BI-PUMP 24V SWITCH KIT	F13965000	1
10	BI-PUMP SWITCH PIN KIT	R13962000	1
11	FLANGE KIT	R09180000	1
12	O RING 2013500 D.135 th.2 (10 pcs.)	R13958000	1
13	BI-PUMP 12/24V MOTOR BRUSH KIT	R14924000	1
14	BI-PUMP BASE EQUIPMENT KIT	R14140000	1
15	BI-PUMP HANDLE KIT	F14200000	1
18	BI-PUMP CABLE 2X6X2m W/EYELET TERMINAL	F14334000	1
19	BI-PUMP CABLE 2X6X4m W/EYELET TERMINAL	F14335000	1

9.7

PUMP DETAILS:

EXPLODED VIEW: CK 50/70 K33 (CUBE)

Figure 33



9.7
PUMP DETAILS:

EXPLODED VIEW: CK 50/70 K33 (CUBE)

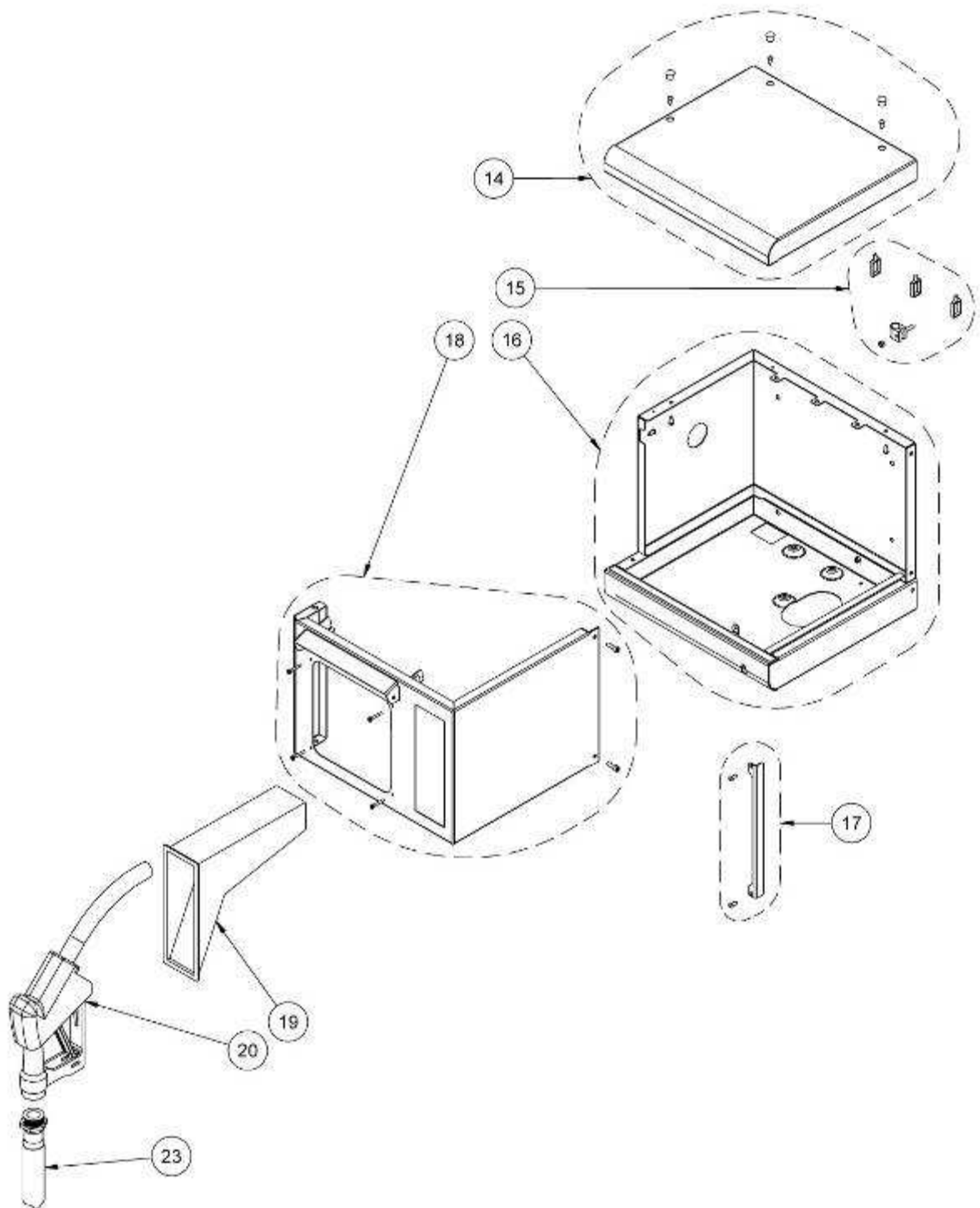
Pos.	Description	Code	No. Req'd
0001	COMP. LOWER PLATE -NW-+SCREWS+RAT PL VERS. DC	R1333200A	1
0002	UPPER PLATE CUBE56 RED RAL 3002 -NW-	R1228600B	1
0003	RATING PLATE CUBE 56/K33	R12696000	1
0005	NOZZLE HOLDER CUBE 50	R0873500B	1
0007	AUTOMATIC NOZZLE 60 1" F BLACK	F00603060	1
0008	DIESEL OIL HOSE D.20 M. 4 CONNECT. 1" x 1"	F08976000	1
0009	KNOB + ELBOW KIT	R12634000	1
0014	PANTHER UNIT 12V VERSION CUBE DC (CK 56)	R13333000	1
	PANTHER UNIT 24V VERSION CUBE DC (CK 70)	R13334000	1
0032	BOTTOM VALVE KIT	R08958000	1
0060	LITRE-COUNTER UNIT K33 CUBE 56	R12491000	1
0061	FLANGED MANIFOLD + SCREWS + O RING KIT	R10824000	1
0063	NOZZLE TRIGGER KIT FOR CUBE 56	R12700000	1
0064	HOSE SUPPORT KIT FOR CUBE 56	R12701000	1
0065	PUMP FASTENING KIT	R12723000	1
0066	CABLE + CABLE GRIP 12.7 KIT	R13335000	1
0067	PANTHER DC ACTIVATION KIT	R13336000	1

9.8

PUMP DETAILS:

EXPLODED VIEW: CK 70 MC 30

Figure 34

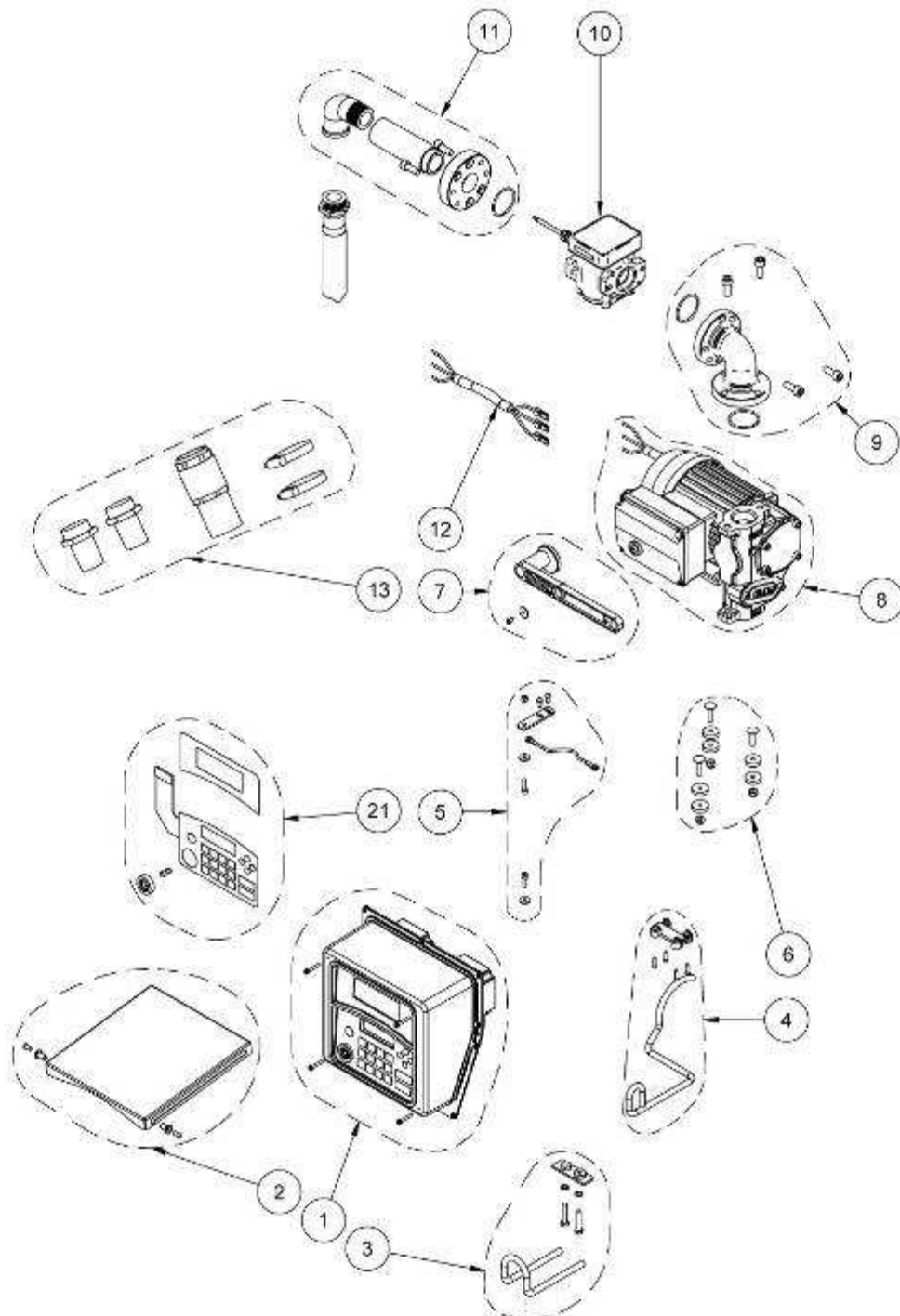


9.8

PUMP DETAILS:

EXPLODED VIEW: CK 70 MC 30

Figure 35



9.8
PUMP DETAILS:

CUBE CK 70 MC 30

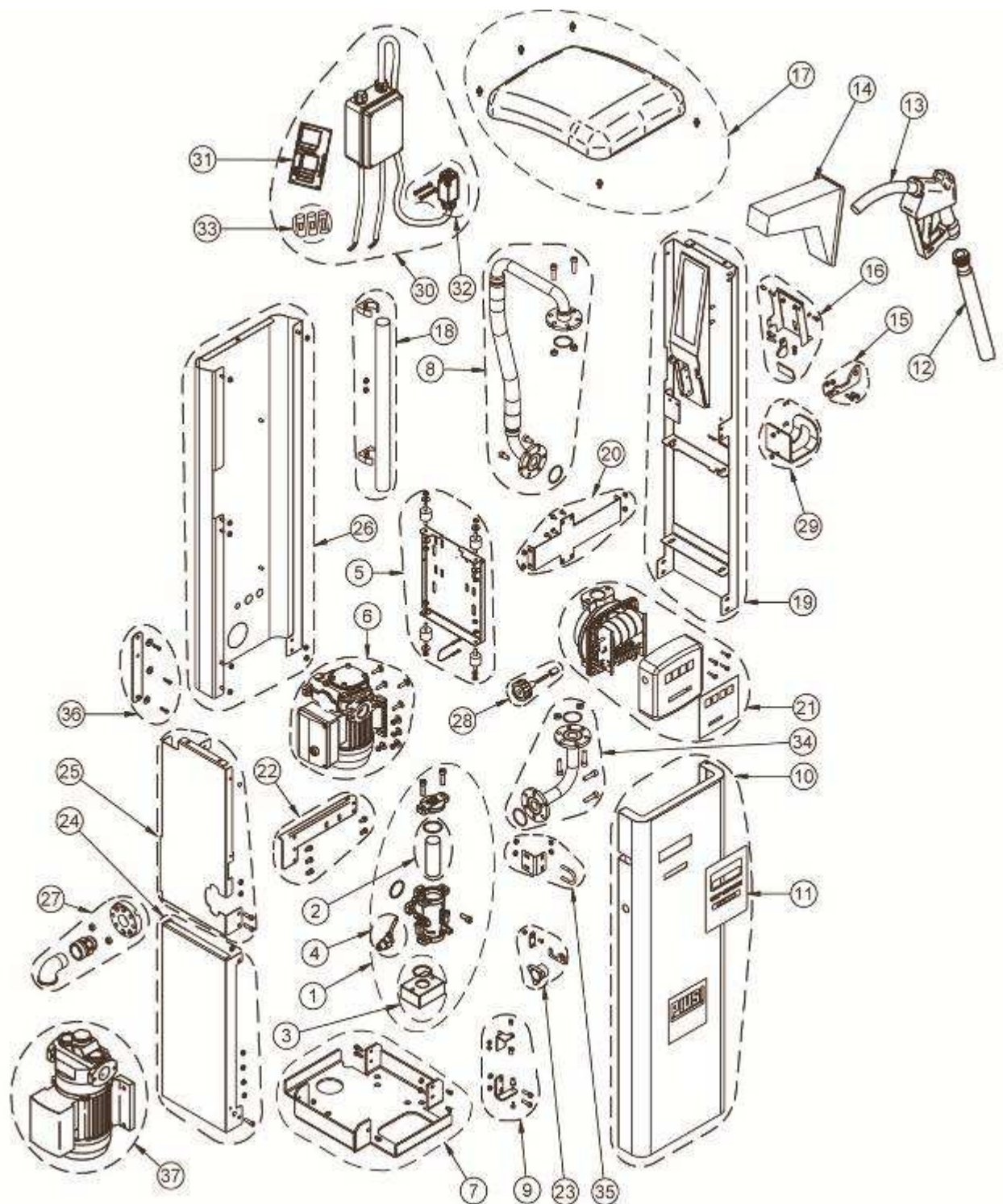
Pos.	Description	Code	No. Req'd
1	CARD PANEL KIT CUBE MC (50UT)	R12733000	1
2	SUNSHADE KIT SELF-SERVICE TANK MC	R12613000	1
3	HOSE HANGER KIT CUBE MC	R1261200A	1
4	ROCKER ARM CONTROL KIT	R12611000	1
5	HINGE KIT CUBE MC	R12616000	1
6	PUMP FASTENING KIT KIT	R08744000	1
7	OPERATION CONTROL KIT CUBE MC	R1081800A	1
8	PANTHER 72 230/50 UNIT FOR CUBE MC -NW	R12968000	1
9	MANIFOLD KIT CUBE 70/33	R11092000	1
10	ZZKIT K600/3 + CABLE 0.5 M	R10981000	1
11	DELIVERY KIT FOR CUBE MC	R12796000	1
12	MC BOX - CUBE MC/PUMP CABLE KIT	R12742000	1
13	BOTTOM VALVE KIT	R08958000	1
14	ZZKIT ROOF CUBE MC	R12618000	1
15	CABLE-GRIP KIT CUBE MC	R12713000	1
16	CUBE MC BASE KIT – STANDARD HOOK	R1262100A	1
17	CUBE MC FRAME REINFORCEMENT ZZKIT	R12610000	1
18	CUBE MC FRONT DOOR KIT	R12622000	1
19	NOZZLE HOLDER CUBE 50	R0873500B	1
20	AUTOMATIC NOZZLE 60 1" F BLACK	F00603060	1
21	KEYPAD+SENSOR KIT CUBE MC	R12615000	1
22	FUSE KIT CUBE MC NEW	R13574000	1
23	DIESEL OIL HOSE D.25 M 4 CONNECT. 1" x 1"	F08977000	1

9.9

PUMP DETAILS:

EXPLODED VIEW: SS 70/100 TANK K44 (PULSER)

Figure 36



9.9
PUMP DETAILS:

EXPLODED VIEW: SS 70/100 TANK K44 (PULSER)

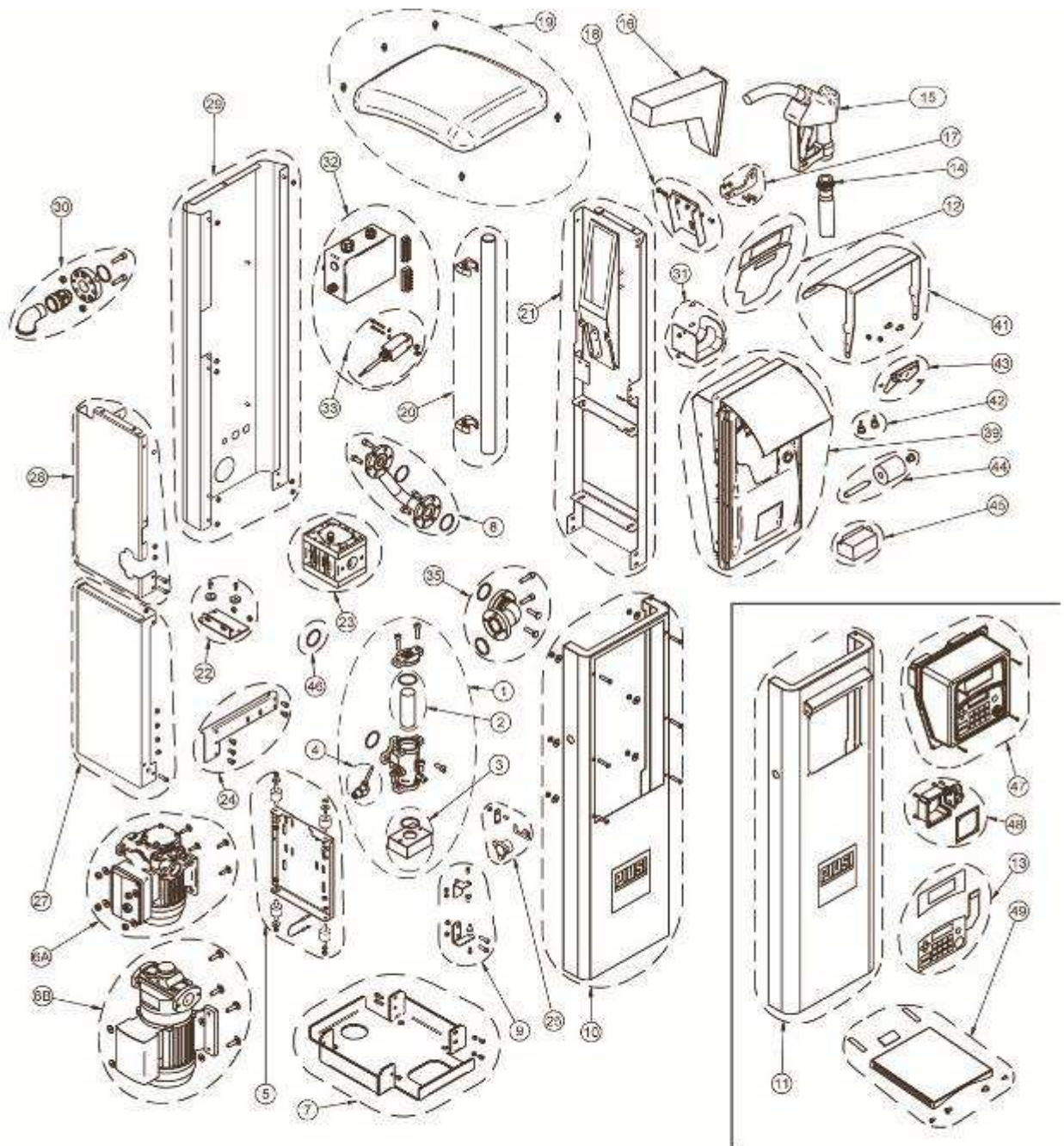
Pos.	Description	Code	No. Req'd
1	FILTER UNIT SS	R12348000	1
2	FILTER KIT	R13434000	1
3	FLANGE KIT SS	R12577000	1
4	AIR VENT KIT VISCOMAT G 1/4"	R1127400A	1
5	PUMP SUPPORT KIT SS TANK K44	R13045000	1
6	PANTHER 72 230V/50HZ (SS 70)	000732000	1
7	SS BASE + SCREWS KIT	R1221600A	1
8	COUPLED AND FLANGED PIPE KIT	R13079000	1
9	SS DOOR FASTENING KIT	R13400000	1
10	DOOR KIT SELF SERVICE TANK K44	R13461000	1
11	RATING PLATE 170x130 L SELF SERVICE K44	R11959000	1
12	DIESEL OIL HOSE D.25 M.4 CONNECT. 1" x 1"	F08977000	1
13	AUTOMATIC NOZZLE 80 1" F BLACK	F00604030	1
	AUTOMATIC NOZZLE 120 1" F BLACK	F00610020	1
14	NOZZLE HOLDER CUBE 50	R0873500B	1
15	NOZZLE TRIGGER KIT SS	R12218000	1
16	NOZZLE SUPPORT KIT SELF SERVICE K44	R12178000	1
17	COVER KIT BLACK SS	R12359000	1
18	CABLE GUIDE KIT	R13743000	1
19	LEFT SIDE KIT SELF SERVICE TANK	R1345900A	1
20	MOUNT KIT K44 SELF SERVICE TANK	R13450000	1
21	LITRE-COUNTER K44 VER.C	000562000	1
	LITRE-COUNTER UNIT K44 PULSER VER.C	R14186000	1
22	FILTER SUPPORT CROSS PIECE KIT + SCREWS SS K44	R1220200B	1
23	DOOR LOCK KIT SELF SERVICE TANK K44	R13074000	1
24	LOWER R.H. SIDE KIT SELF SERVICE TANK K44	R13452000	1
25	UPPER R.H. SIDE KIT SELF SERVICE TANK K44	R13453000	1
26	REAR PLATE KIT SELF SERV. K44	R13455000	1
27	DELIVERY HOSE CONNECTION KIT	R13258000	1
28	RESET KNOB KIT SELF S. K44	R12664000	1
29	HOSE HANGER HOOK KIT GLM	R13750000	1
30	ELECTRICAL GEAR KIT SELF SERVICE TANK K44	R12234000	1
31	CARD SS	R10945000	1
32	MICROSWITCH KIT SELF SERVICE TANK K44	R12236000	1
33	FUSE KIT SS	R13432000	1
34	RIGID TUBE KIT SELF SERVICE TANK K44	R13250000	1
35	RIGID TUBE FASTENING KIT SELF S. TANK K44	R13448000	1
36	FILTER UNIT SS	R12348000	1
37	E 120/M + INT. FLANGE D.80 (SS 100)	000326000	1

9.10

PUMP DETAILS:

EXPLODED VIEW: SS 70/100 TANK MC/FM

Figure 37



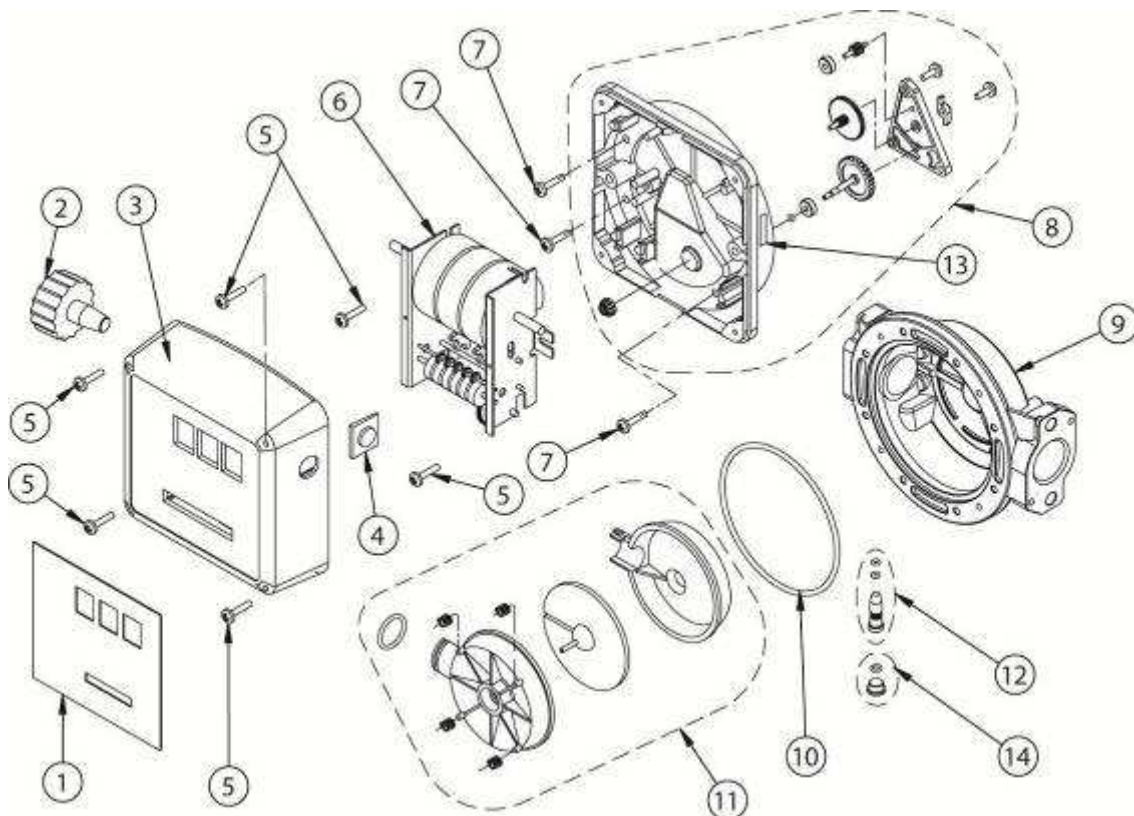
9.10
PUMP DETAILS:

EXPLODED VIEW: SS 70/100 TANK MC/FM

Pos.	Description	Code	No. Req'd
1	FILTER UNIT SS	R12348000	1
2	FILTER KIT	R13434000	1
3	FLANGE KIT SS	R12577000	1
4	AIR VENT KIT VISCOMAT G 1/4"	R1127400A	1
5	PUMP MOUNT KIT SS TANK K44	R13045000	1
6	PANTHER 72 230V/50HZ (SS 70)	000732000	1
	E 120/M + INT. FLANGE D.80 (SS 100)	000326000	1
7	SS BASE + SCREWS KIT	R1221600A	1
8	PIPE CONNECT.+FLANGE KIT SELF.S. TANK FM+MC	R13251000	1
9	DOOR FASTENING KIT SS	R13400000	1
10	DOOR KIT SELF SERVICE TANK FM	R13252000	1
11	DOOR KIT SELF SERVICE TANK MC	R13460000	1
12	KEYPAD KIT SS FM	R13402000	1
13	RATING PLATE+KEYPAD KIT SS MC	R13429000	1
14	DIESEL OIL HOSE D.25 M.4 CONNECT. 1" x 1"	F08977000	1
15	AUTOMATIC NOZZLE 80 1" F BLACK (SS 70)	F00604030	1
	AUTOMATIC NOZZLE 120 1" F BLACK (SS 100)	F00610020	1
16	NOZZLE HOLDER CUBE 50	R0873500B	1
17	NOZZLE TRIGGER KIT SS	R12218000	1
18	NOZZLE SUPPORT KIT	R13403000	1
19	COVER KIT SS BLACK	R12359000	1
20	CABLE RETENTION KIT SELF S. TANK FM+MC	R13076000	1
21	LEFT SIDE KIT SELF SERVICE TANK	R1345900A	1
22	MOUNT KIT K600/3 SELF S. TANK FM+MC	R13449000	1
23	K600/3 PULS/SINGLE 1" GAS (SS 70 MC and SS 100 FM)	000472000	1
	KIT K600/3 + CABLE 0.5 M. (SS 70 FM)	R13777000	1
	ASSEMBLY K600/3 PULS/SING.CABLE 1.05m (SS 100 MC)	R14185000	1
24	FILTER SUPPORT CROSS PIECE KIT + SCREWS SS K44	R1220200B	1
25	DOOR LOCK KIT SELF SERVICE TANK K44	R13074000	1
26	LOWER R.H. SIDE KIT SELF SERVICE TANK K44	R13452000	1
27	UPPER R.H. SIDE KIT SELF SERVICE TANK K44	R13453000	1
28	COMPL. REAR PLATE KIT SELF S. TANK FM+MC	R13454000	1
29	DELIVERY HOSE CONNECTION KIT	R13258000	1
30	HOSE HANGER HOOK KIT GLM	R13750000	1
31	RATING PLATE+KEYPAD KIT SS MC	R13429000	1
32	ELECTRICAL GEAR UNIT SELF S. TANK FM+MC	R13077000	1
33	MICROSWITCH KIT SELF SERVICE TANK K44	R12236000	1
	MICROSWITCH KIT (SS 100 MC)	R13753000	1
35	FLANGED MANIFOLD + SCREWS + O RING KIT	R10824000	1
39	PANEL SELF SERVICE FM DOUBLE CODE (FM)	R1245200A	1
41	SUNSHADE KIT SS (FM)	R13421000	1
42	PRINTER FLAP KNOBS KIT (FM)	R13422000	1
43	CUTTER COVER KIT SS (FM)	R13423000	1
44	PAPER SUPPORT KIT SS (FM)	R13424000	1
45	PRINTER BOARD KIT MC (FM)	R13425000	1
46	O RING KIT 3156 OVAL SECTION	R13426000	1
47	PANEL SELF SERVICE MC DOUBLE CODE	R1320500A	1
48	TERMINAL BOARD COVER KIT SS MC	R13428000	1
49	SUNSHADE KIT SELF. SERVICE TANK MC	R12613000	1

9.11
LITRE-COUNTER DETAILS:

EXPLODED VIEW: K 33 - K 44

Figure 38


Pos.	Description	Code	No. Req'd
1	ADHESIVE RATING PLATE KIT K33 -PIUSI-	R08839000	1
2	RESET KNOB K33/K44	R08755000	1
3	EXTERNAL PLASTIC COVER KIT K33/K44	R08746000	1
4	EXT. PLASTIC COVER PLUG KIT K33/K44	R08763000	1
5	SCREW KIT UNI8112 PH/TT 8.8 GALV. 4x20	R08718000	1
6	3-DIGIT COUNTER KIT - LITRES-	R08761000	1
7	SCREW KIT UNI8112 PH/TT 8.8 GALV. 5x16	R08826000	1
8	COMPL. CASING COVER KIT K33/LITRES -NW-	R0872500A	1
9	LITRE-COUNTER CASING KIT K33/K44 GAS -NW-	R0872000B	1
10	O RING 4450 NBR 70SH	R13792000	1
11	MEASURING CHAMBER UNIT	R08717000	1
12	BY-PASS ADJ. SCREW + O RING KIT -K33/K44-	R0909100B	1
14	PLUG + CLOSING O RING KIT FOR BYPASS K33/K44	R08722000	1

10.1
DIESEL TANK - DTO 10:
CALIBRATION TABLE

Diameter	mm.	900
Plating length	mm.	1.500
Plate thickness	mm.	3
Total capacity	l.	999

Height cm.	Capacity litres	Height cm.	Capacity litres	Height cm.	Capacity litres	Height cm.	Capacity litres	Height cm.	Capacity litres
1	2	19	151	37	387	55	643	73	872
2	5	20	163	38	401	56	657	74	883
3	10	21	175	39	415	57	671	75	893
4	15	22	187	40	429	58	685	76	903
5	21	23	199	41	444	59	698	77	913
6	28	24	212	42	458	60	712	78	923
7	35	25	224	43	472	61	725	79	932
8	42	26	237	44	487	62	738	80	941
9	50	27	250	45	501	63	751	81	949
10	59	28	263	46	515	64	764	82	957
11	68	29	277	47	530	65	777	83	965
12	77	30	290	48	544	66	790	84	972
13	87	31	304	49	558	67	802	85	978
14	97	32	317	50	573	68	814	86	984
15	107	33	331	51	587	69	826	87	990
16	118	34	345	52	601	70	837	88	994
17	129	35	359	53	615	71	849	89	997
18	140	36	372	54	629	72	861	90	999

DATA GIVEN IN THE TABLE ARE THEORETICAL AND COULD VARY BY $\pm 4\%$; IN ANY CASE THEIR RELIABILITY DEPENDS ON THE TANK BEING CORRECTLY INSTALLED, IN OTHER WORDS IT MUST BE PERFECTLY HORIZONTAL.

10.2
DIESEL TANK - DTO 15:
CALIBRATION TABLE

Diameter	mm.	1.100
Plating length	mm.	1.500
Plate thickness	mm.	3
Total capacity	l.	1.500

Height cm.	Capacity litres	Height cm.	Capacity litres	Height cm.	Capacity litres	Height cm.	Capacity litres	Height cm.	Capacity litres
1	2	23	228	45	578	67	957	89	1301
2	6	24	242	46	595	68	974	90	1315
3	11	25	256	47	612	69	991	91	1328
4	17	26	271	48	629	70	1008	92	1341
5	24	27	286	49	646	71	1025	93	1354
6	32	28	301	50	664	72	1041	94	1366
7	40	29	316	51	681	73	1058	95	1378
8	49	30	332	52	598	74	1074	96	1390
9	58	31	347	53	716	75	1090	97	1401
10	68	32	363	54	733	76	1106	98	1412
11	78	33	379	55	750	77	1122	99	1423
12	89	34	395	56	768	78	1138	100	1433
13	100	35	411	57	785	79	1154	101	1443
14	111	36	427	58	803	80	1169	102	1452
15	123	37	443	59	820	81	1185	103	1461
16	135	38	460	60	837	82	1200	104	1469
17	147	39	476	61	855	83	1215	105	1477
18	160	40	493	62	872	84	1230	106	1484
19	173	41	510	63	889	85	1245	107	1490
20	186	42	527	64	906	86	1259	108	1494
21	200	43	544	65	923	87	1273	109	1498
22	214	44	561	66	940	88	1287	110	1500

DATA GIVEN IN THE TABLE ARE THEORETICAL AND COULD VARY BY $\pm 4\%$; IN ANY CASE THEIR RELIABILITY DEPENDS ON THE TANK BEING CORRECTLY INSTALLED, IN OTHER WORDS IT MUST BE PERFECTLY HORIZONTAL.

10.3
DIESEL TANK - DTO 20:
CALIBRATION TABLE

Diameter	mm.	1.270
Plating length	mm.	1.500
Plate thickness	mm.	3
Total capacity	l.	1.999

Height cm.	Capacity litres	Height cm.	Capacity litres	Height cm.	Capacity litres	Height cm.	Capacity litres	Height cm.	Capacity litres
1	2	27	314	53	799	79	1321	105	1782
2	7	28	331	54	819	80	1340	106	1797
3	12	29	348	55	839	81	1359	107	1811
4	19	30	365	56	859	82	1379	108	1826
5	27	31	382	57	879	83	1398	109	1840
6	35	32	400	58	900	84	1417	110	1853
7	44	33	418	59	920	85	1436	111	1867
8	53	34	436	60	940	86	1455	112	1879
9	63	35	454	61	960	87	1474	113	1892
10	74	36	472	62	980	88	1492	114	1904
11	85	37	490	63	1000	89	1511	115	1916
12	97	38	509	64	1021	90	1529	116	1927
13	109	39	527	65	1041	91	1547	117	1938
14	122	40	546	66	1061	92	1565	118	1948
15	134	41	565	67	1081	93	1583	119	1957
16	148	42	584	68	1101	94	1601	120	1966
17	161	43	603	69	1122	95	1619	121	1974
18	175	44	622	70	1142	96	1636	122	1982
19	190	45	642	71	1162	97	1653	123	1989
20	204	46	661	72	1182	98	1670	124	1993
21	219	47	680	73	1202	99	1687	125	1997
22	234	48	700	74	1222	100	1703	126,6	1999
23	250	49	720	75	1242	101	1719		
24	266	50	740	76	1261	102	1735		
25	282	51	759	77	1281	103	1751		
26	298	52	779	78	1301	104	1767		

DATA GIVEN IN THE TABLE ARE THEORETICAL AND COULD VARY BY $\pm 4\%$; IN ANY CASE THEIR RELIABILITY DEPENDS ON THE TANK BEING CORRECTLY INSTALLED, IN OTHER WORDS IT MUST BE PERFECTLY HORIZONTAL.

10.4
DIESEL TANK - DTO 35:
CALIBRATION TABLE

Diameter	mm.	1.600
Plating length	mm.	1.500
Plate thickness	mm.	3
Total capacity	l.	3.380

Height cm.	Capacity litres	Height cm.	Capacity litres	Height cm.	Capacity litres	Height cm.	Capacity litres	Height cm.	Capacity litres
1	2	33	502	65	1287	97	2141	129	2917
2	7	34	524	66	1314	98	2168	130	2938
3	14	35	546	67	1340	99	2194	131	2959
4	22	36	568	68	1367	100	2220	132	2980
5	31	37	591	69	1393	101	2246	133	3000
6	40	38	619	70	1420	102	2272	134	3020
7	51	39	636	71	1447	103	2298	135	3040
8	62	40	659	72	1473	104	2323	136	3059
9	74	41	683	73	1500	105	2349	137	3078
10	87	42	706	74	1527	106	2374	138	3097
11	100	43	730	75	1554	107	2400	139	3115
12	114	44	754	76	1581	108	2425	140	3133
13	129	45	778	77	1607	109	2450	141	3151
14	144	46	802	78	1634	110	2475	142	3168
15	159	47	827	79	1661	111	2500	143	3185
16	175	48	851	80	1688	112	2525	144	3201
17	191	49	876	81	1715	113	2549	145	3217
18	208	50	901	82	1742	114	2574	146	3232
19	225	51	926	83	1769	115	2598	147	3247
20	243	52	951	84	1795	116	2622	148	3262
21	261	53	976	85	1822	117	2646	149	3276
22	279	54	1002	86	1849	118	2670	150	3289
23	298	55	1027	87	1876	119	2693	151	3306
24	317	56	1053	88	1903	120	2717	152	3318
25	336	57	1078	89	1929	121	2740	153	3330
26	356	58	1104	90	1956	122	2763	154	3340
27	376	59	1130	91	1983	123	2785	155	3350
28	396	60	1156	92	2009	124	2808	156	3359
29	417	61	1182	93	2036	125	2830	157	3367
30	438	62	1208	94	2062	126	2852	158	3373
31	459	63	1235	95	2089	127	2874	159	3379
32	480	64	1261	96	2115	128	2896	160	3381

DATA GIVEN IN THE TABLE ARE THEORETICAL AND COULD VARY BY $\pm 4\%$; IN ANY CASE THEIR RELIABILITY DEPENDS ON THE TANK BEING CORRECTLY INSTALLED, IN OTHER WORDS IT MUST BE PERFECTLY HORIZONTAL.

10.5
DIESEL TANK - DTO 50:
CALIBRATION TABLE

Diameter	mm.	1.600
Plating length	mm.	2.250
Plate thickness	mm.	3
Total capacity	l.	4.901

Height cm.	Capacity litres	Height cm.	Capacity litres	Height cm.	Capacity litres	Height cm.	Capacity litres	Height cm.	Capacity litres
1	4	33	719	65	1869	97	3129	129	4260
2	11	34	751	66	1908	98	3168	130	4291
3	20	35	783	67	1947	99	3206	131	4321
4	31	36	815	68	1986	100	3245	132	4350
5	44	37	848	69	2026	101	3283	133	4379
6	58	38	881	70	2065	102	3321	134	4408
7	72	39	914	71	2104	103	3359	135	4436
8	88	40	948	72	2144	104	3396	136	4464
9	106	41	982	73	2183	105	3434	137	4491
10	123	42	1017	74	2223	106	3471	138	4517
11	142	43	1051	75	2262	107	3508	139	4543
12	162	44	1086	76	2302	108	3545	140	4569
13	183	45	1121	77	2342	109	3582	141	4594
14	204	46	1157	78	2381	110	3618	142	4618
15	226	47	1193	79	2421	111	3655	143	4642
16	248	48	1229	80	2461	112	3691	144	4665
17	272	49	1265	81	2500	113	3727	145	4687
18	296	50	1301	82	2540	114	3762	146	4709
19	320	51	1338	83	2580	115	3798	147	4730
20	345	52	1375	84	2619	116	3833	148	4750
21	371	53	1412	85	2659	117	3868	149	4769
22	398	54	1449	86	2698	118	3902	150	4787
23	424	55	1486	87	2738	119	3936	151	4805
24	452	56	1524	88	2777	120	3970	152	4820
25	480	57	1562	89	2817	121	4004	153	4837
26	508	58	1600	90	2856	122	4037	154	4850
27	537	59	1638	91	2895	123	4070	155	4864
28	566	60	1676	92	2935	124	4103	156	4877
29	596	61	1715	93	2974	125	4135	157	4888
30	626	62	1753	94	3013	126	4167	158	4895
31	656	63	1792	95	3052	127	4199	159	4901
32	687	64	1830	96	3091	128	4230	159,5	4901,5

DATA GIVEN IN THE TABLE ARE THEORETICAL AND COULD VARY BY $\pm 4\%$; IN ANY CASE THEIR RELIABILITY DEPENDS ON THE TANK BEING CORRECTLY INSTALLED, IN OTHER WORDS IT MUST BE PERFECTLY HORIZONTAL.

10.6
DIESEL TANK - DTO 70:
CALIBRATION TABLE

Diameter	mm.	1.700
Plating length	mm.	3.000
Plate thickness	mm.	3
Total capacity	L.	7.005

Height cm.	Capacity litres	Height cm.	Capacity litres	Height cm.	Capacity litres	Height cm.	Capacity litres	Height cm.	Capacity litres
1	5	35	1040	69	2668	103	4440	137	6049
2	15	36	1082	70	2720	104	4491	138	6091
3	28	37	1125	71	2771	105	4542	139	6131
4	43	38	1169	72	2823	106	4593	140	6172
5	59	39	1213	73	2875	107	4644	141	6211
6	78	40	1257	74	2927	108	4694	142	6251
7	98	41	1302	75	2979	109	4745	143	6289
8	120	42	1347	76	3031	110	4795	144	6327
9	143	43	1392	77	3083	111	4845	145	6365
10	167	44	1438	78	3136	112	4895	146	6402
11	192	45	1484	79	3188	113	4945	147	6438
12	218	46	1531	80	3240	114	4994	148	6473
13	246	47	1577	81	3293	115	5043	149	6508
14	274	48	1624	82	3345	116	5092	150	6542
15	303	49	1672	83	3398	117	5141	151	6576
16	334	50	1720	84	3450	118	5189	152	6609
17	365	51	1767	85	3502	119	5238	153	6640
18	396	52	1816	86	3555	120	5285	154	6671
19	429	53	1864	87	3607	121	5333	155	6702
20	463	54	1913	88	3660	122	5381	156	6731
21	497	55	1962	89	3712	123	5428	157	6759
22	532	56	2011	90	3765	124	5474	158	6787
23	567	57	2060	91	3817	125	5521	159	6813
24	603	58	2110	92	3869	126	5567	160	6838
25	640	59	2160	93	3922	127	5613	161	6862
26	678	60	2210	94	3974	128	5658	162	6885
27	716	61	2260	95	4026	129	5703	163	6907
28	754	62	2311	96	4078	130	5748	164	6927
29	794	63	2361	97	4130	131	5792	165	6946
30	833	64	2412	98	4182	132	5836	166	6962
31	874	65	2463	99	4234	133	5880	167	6977
32	914	66	2514	100	4285	134	5923	168	6990
33	956	67	2565	101	4337	135	5965	169	7000
34	997	68	2617	102	4388	136	6008	169,5	7005

DATA GIVEN IN THE TABLE ARE THEORETICAL AND COULD VARY BY $\pm 4\%$; IN ANY CASE THEIR RELIABILITY DEPENDS ON THE TANK BEING CORRECTLY INSTALLED, IN OTHER WORDS IT MUST BE PERFECTLY HORIZONTAL.

Diametro	mm.	1.900
Lunghezza fasciame	mm.	3.000
Spessore lamiera	mm.	3
Capacità totale	lit.	8.986

Altezza	Capacità	Altezza	Capacità	Altezza	Capacità	Altezza	Capacità	Altezza	Capacità
cm.	litri	cm.	litri	cm.	litri	cm.	litri	cm.	litri
1	6	43	1.541	85	3.929	127	6.444	169	8.525
2	17	44	1.592	86	3.990	128	6.501	170	8.563
3	31	45	1.643	87	4.050	129	6.558	171	8.600
4	47	46	1.695	88	4.111	130	6.615	172	8.636
5	65	47	1.747	89	4.171	131	6.671	173	8.671
6	86	48	1.800	90	4.232	132	6.727	174	8.705
7	108	49	1.853	91	4.293	133	6.783	175	8.739
8	131	50	1.906	92	4.354	134	6.839	176	8.771
9	157	51	1.960	93	4.414	135	6.894	177	8.802
10	183	52	2.014	94	4.475	136	6.949	178	8.832
11	211	53	2.068	95	4.536	137	7.004	179	8.861
12	240	54	2.123	96	4.597	138	7.058	180	8.889
13	276	55	2.178	97	4.658	139	7.112	181	8.916
14	301	56	2.233	98	4.718	140	7.166	182	8.941
15	333	57	2.289	99	4.779	141	7.219	183	8.964
16	367	58	2.345	100	4.840	142	7.272	184	8.986
17	401	59	2.401	101	4.901	143	7.325		
18	436	60	2.457	102	4.961	144	7.377		
19	472	61	2.514	103	5.022	145	7.429		
20	509	62	2.571	104	5.082	146	7.480		
21	547	63	2.628	105	5.143	147	7.531		
22	585	64	2.685	106	5.203	148	7.582		
23	625	65	2.743	107	5.264	149	7.632		
24	665	66	2.801	108	5.324	150	7.682		
25	705	67	2.859	109	5.384	151	7.731		
26	747	68	2.917	110	5.444	152	7.780		
27	789	69	2.975	111	5.504	153	7.829		
28	832	70	3.034	112	5.564	154	7.877		
29	875	71	3.093	113	5.624	155	7.924		
30	919	72	3.152	114	5.683	156	7.971		
31	964	73	3.211	115	5.743	157	8.017		
32	1009	74	3.270	116	5.802	158	8.063		
33	1055	75	3.329	117	5.861	159	8.108		
34	1101	76	3.389	118	5.920	160	8.153		
35	1148	77	3.448	119	5.979	161	8.197		
36	1195	78	3.508	120	6.038	162	8.240		
37	1.243	79	3.568	121	6.097	163	8.283		
38	1.292	80	3.628	122	6.155	164	8.325		
39	1.341	81	3.688	123	6.213	165	8.367		
40	1.390	82	3.748	124	6.271	166	8.407		
41	1.440	83	3.808	125	6.329	167	8.447		
42	1.490	84	3.869	126	6.387	168	8.487		

I DATI RIPORTATI SONO TEORICI E POSSONO VARIARE DI $\pm 4\%$ IN OGNI CASO LA LORO ATTENDIBILITA' DIPENDE DALLA CORRETTA POSA IN OPERA DEL SERBATOIO, CHE DEVE ESSERE INSTALLATO PERFETTAMENTE ORIZZONTALE.

11.1

LEGISLATION:

ITALIAN MINISTERIAL DECREE 19/03/1990

MINISTRY OF THE INTERIOR

DECREE 19 MARCH 1990

Regulations for refuelling with mobile pump-tanks for equipment used on farms, building or work sites and in quarries.

THE MINISTER OF THE INTERIOR

In concert with

THE MINISTER OF FINANCE

AND

THE MINISTER OF INDUSTRY,
COMMERCE AND HANDICRAFT

Given art. 63 of the Consolidation of the laws on public order No. 733 of 18 July 1931;

Given art. 23 of the Royal Decree Law No. 1741 of 2 November 1933;

Given the decree of the Minister of the Interior of 31 July 1934 laying down the safety regulations for the processing, storage, use and sale of mineral oils and for transportation of the same oils;

Given the circular letter of the Ministry of the Interior No. 10 dated 10 February 1969 on service stations;

Given the decree of the Minister of the Interior of 30 November 1983 laying down terms, general definitions and graphic symbols for fire prevention;

Given art. 21 of the President of the Republic's decree No. 577 of 29 July 1982;

Heard the Ministry of the Interior's advisory committee for explosive and inflammable substances;

Considered the need to supplement art. 82 of the decree of the Minister of the Interior of 31 July 1934 and systematically governed the subject matter concerning refuelling by means of mobile pump-tanks for machine used on farms, worksites and in quarries;

Decrees:

The installation and utilization of mobile pump-tanks for private use for category C liquids solely for refuelling equipment and motor vehicles on farms, in quarries and pits and on road, railway and building sites, on the following conditions:

The tank shall have a geometric capacity of no more than 9,000 litres;

The "pump-tank" shall be "type approved" by the Ministry of the Interior pursuant to all that is provided for under heading I, No. XVII, of the decree of the Minister of the Interior dated 31 July 1934;

The "pump-tank" shall be provided with a containment basin having a capacity at least half that of the geometric capacity of the tank, a roof to protect against the elements made in a non-combustible material and suitable earthing/grounding;

an internal safety and protection distance of at least 3 m shall be observed;

the "pump-tank" shall be surrounded by an area having a depth of at least 3 m totally cleared and without vegetation that could create a fire hazard;

the prohibitions and limitations envisaged under the aforementioned decree of the Minister of the Interior of 31 July 1934 shall be complied with;

at least three portable fire-extinguishers shall be installed in the vicinity of the plant, "type approved" by the Ministry of the Interior for fire classes A-B-C with extinguishing capacity of at least 39 A – 144 B – C, also suitable for use on live equipment;

the plants and electrical equipment shall be in conformity with all that is established under Law No. 186 of 1st March 1968;

the "pump-tank" shall be transported empty.

This decree will be published in the *Official Gazette* of the Italian Republic.

Rome, on 19 March 1990

The Minister of the Interior
GAVA

The Finance Minister
FORMICA

The Minister of Industry, Commerce and Handicraft
BATTAGLIA

=====

OFFICIAL GAZETTE No. 76 of 31 MARCH 1990

11.2

LEGISLATION:

F.P.C. EXEMPT

DIESEL TANK - EXEMPT FROM FIRE PREVENTION CERTIFICATE.

Our mobile pump-tanks, mod. DIESEL TANK and DIESEL TANK BOX type approved by the Italian Ministry of the Interior in accordance with heading I, subparagraph XVII of Italian Ministerial Decree (D.M.) of 31/07/34, with certificates No. 200 / 4113 / 170 dated 14.02.1989 and subsequent extensions, for their type and characteristics, come under D.M. 19/03/1990, published in the Official Gazette No. 76 dated 31.03.1990,

ARE EXEMPT FROM FIRE PREVENTION CERTIFICATE

as per the circular letter in the form of a telegram issued by the Ministry of the Interior Civil Defence and Fire-fighting Services Directorate-General – Central Technical Office, on 12/04/1990, which we quote in full below:


4113 170 No. 6100 ATTENTION IS DRAWN TO THE MINISTERIAL DECREE OF 19 MARCH 1990 PUBLISHED IN THE OFFICIAL GAZETTE NUMBER 76 OF 31 MARCH 1990 AND CONCERNING: STANDARDS FOR REFUELLING BY MEANS OF MOBILE PUMP-TANKS FOR EQUIPMENT USED ON FARMS, IN QUARRIES AND ON WORKSITES. IT IS SPECIFIED THAT THE AFORESAID MOBILE PUMP-TANKS ARE NOT SUBJECT TO FIRE-PREVENTION AND PROTECTION CONTROLS BY THE FIRE BRIGADE/SERVICE AND THAT TECHNICAL REGULATIONS CONTAINED IN THE DECREE OF 19 MARCH 1990 MUST BE COMPLIED WITH UNDER THE RESPONSIBILITY OF THE OWNER OF THE ACTIVITY IN QUESTION. SIGNED GENERAL INSPECTOR CESARE SANGIORGI.

11.3

LEGISLATION:

LICENCE EXEMPTION M. OF INDUSTRY

MODULARIO
I.C.A. - 22



PLA VEN 17 1991
28 MAR. 1991

13 MAR. 1991

ANCE
Via Guattani 16-18

Dir.Gen.Fonti Energia e Ind.Base

Divisione 2^a
Prot. N. 620473
Risposta al foglio N. del

A. N. C. E. 0061 ROMA

28 MAR. 1991

OGGETTO : Contenitori mobili per macchine di cantiere.

Con riferimento al quesito posto circa l'assoggettabilità al regime della concessione dei contenitori mobili adibiti all'alimentazione delle macchine in uso presso i cantieri, si conferma che, ai sensi dell'art.11 - 2° comma del R.D.L. 2 novembre 1933 n.1741, gli impianti di oli minerali per uso privato sono esonerati dall'obbligo della concessione, se non superano la capacità di mc.25.

COPIA
IL DIRETTORE GENERALE

RR/sc

ISTITUTO POLIGRAFICO E ZECCA DELLO STATO - N. 10, piazza Venezia, per ogni altro quesito, ingegnere e industriale nella risposta al N. 10, piazza Venezia, di Roma, a cui si risponde.

Ministry of Industry, Commerce and Handicraft

Rome, 13 March 1991

*Energy Sources and Basic Industries Directorate-General
2nd Division*

*To: ANCE
Via Guattani 16-18
00161 ROME*

Prot. No. 620473

RE: Mobile tanks for construction equipment.

With reference to the query regarding whether or not mobile tanks intended to supply equipment used on work sites are subject to licensing, it is hereby confirmed that, pursuant to the 2nd paragraph of section 11 of the Royal Decree Law No. 1741 of 2 November 1933, mineral oil plants for private use are exonerated from the obligation for a licence provided they do not exceed the capacity of 25 cu.m.

THE GENERAL MANAGER

11.3**LEGISLATION:****ANCE CIRCULAR LETTER****ANCE****ASSOCIAZIONE NAZIONALE COSTRUTTORI EDILI**AREA TECNOLOGIE
NORMATIVA TECNICA E RICERCA

Prot. n. 40-EI/INC

On.le
Ministero dell'Industria
del Commercio e dell'Artigianato
Dir.Gen.Fonti Energia
Divisione 2^a
Via Molise, 2
00187 R O M A

Roma, 28/1/1991

Argomento: Contenitori mobili per macchine di cantiere.
D.M. 19.3.1990.

COPIA

Onde poter fornire le necessarie indicazioni alle imprese associate, ci permettiamo di porre il seguente quesito.

Per l'alimentazione delle macchine in uso presso aziende agricole, cave e cantieri il D.M. 19.3.1990 consente l'uso di contenitori mobili di capacità inferiore a 9 mc eserciti secondo le norme fissate dal decreto stesso, il cui prototipo sia stato omologato dal Ministero dell'Interno e di cui lo stesso Ministero dell'Interno ha già confermato, con propria circolare, l'esenzione dal certificato di prevenzione incendi.

Ai sensi dell'art.11/2^a comma del R.D.L. 2.11.1933, n.1741 e ove destinati al rifornimento delle sole macchine operatrici nel cantiere i contenitori in parola non risulterebbero soggetti al regime di concessione degli impianti per uso privato in quanto la loro capacità è inferiore a quella citata nel R.D.L. di cui sopra.

Su quest'ultima interpretazione chiediamo il Vostro autorevole parere.

Grati per l'attenzione porgiamo i sensi della nostra più perfetta osservanza.

IL DIRETTORE GENERALE
Carlo Ferroni

ARC/cc

00161 Roma, Via Guattani 16-18
Telefono: (06) 84881
TLX: 626846 ANCE I - 623151 ANCE I
Telefax: (06) 8444364

Codice Fiscale 80022490587

ANCE
National Builders' Association

Prot. No. 40-EI/INC

**Ministry of Industry
Commerce and Handicraft
Energy Sources Directorate-General
2nd Division
Via Molise, 2
00187 ROME**

Rome, 28/1/1991

**Re: Mobile tanks for construction equipment.
Ministerial Decree of 19.3.1990**

To be able to provide the necessary information to the member building contractors, we have the following query to put to you.

To feed equipment used on farms, building/work sites and in quarries the Ministerial Decree of 19.3.1990 allows the use of mobile tanks with a capacity of less than 9 m³ managed in accordance with the rules and regulations established by the same decree, the prototype of which has been approved by the Ministry of the Interior and for which the same Ministry of the Interior has already confirmed, with its circular letter, exemption from the fire prevention certificate.

Pursuant to the 2nd paragraph of section 11 of the Royal Decree Law No. 1741 of 2.11.1933 and where intended for refuelling just works vehicles on building sites, the tanks in question would not be subject to the condition of licensing of plants for private use since their capacity is less than that mentioned in the aforesaid Royal Decree Law.

We would kindly ask you for your authoritative opinion on this interpretation.

Thanking you for your attention, we remain
yours truly,

THE GENERAL MANAGER
Carlo Ferroni

11.4

LEGISLATION:

TYPE APPROVAL CERTIFICATE

MODULARIO INTERNO - 311

MOD. 1 P.C.

Roma, 11.12.1997 19

Ministero dell'Interno
DIREZIONE GENERALE DELLA PROTEZIONE CIVILE
E DEI SERVIZI ANTINCENDI
SERVIZIO TECNICO CENTRALE
Ispettorato attività e norm. spec.
di prevenzione incendi

Divisione *La*
Prot. N° NS 2870 *Alligati*
4113 sott. 170

Ala Soc. A.M.A. S.r.l.
Via Torre - Fraz. Lughignano
31100 CASALE SUL SILE (TV)

Richiesta al Foglio del
Dir. La N°

OGGETTO: Soc. A.M.A. S.r.l. - Rinnovo di validità della Approvazione di tipo dei contenitori-distributori rimovibili per carburanti di cat. "C" marca A.M.A. S.r.l. nelle versioni:
"DT-0/15" - capacità max 1.500 litri;
"DT-0/35" - capacità max 3.500 litri;
"DT-0/60" - capacità max 6.000 litri;
"DT-0/80" - capacità max 8.000 litri;
"DT-0/90" - capacità max 9.000 litri.

COPIA

e.p.c.: All'Ufficio Centrale Metrico del
Ministero dell'Industria del
Commercio e dell'Artigianato
Via Antonio Bosio, 15
00161 R O M A

Alla Direzione del Centro Studi
ed Esperienze
Piazza Scilla n°2
00178 Capannelle - R O M A

Questo Ministero ha esaminato l'istanza presentata da codesta Società intesa ad ottenere il rinnovo di validità dell'approvazione di tipo ai sensi del Titolo I, punto XVII del D.M. 31 luglio 1934 e successive modificazioni e del D.M. 19.03.1990 relativa ai contenitori-distributori rimovibili indicati in oggetto.

Al riguardo, vista l'Approvazione di Tipo n° 15911/4113 sott. 170 rilasciata da questo Ministero in data 04.11.93 e preso atto della dichiarazione di cui alla citata istanza di codesta Società, contenente l'impegno a costruire i contenitori-distributori rimovibili di cui all'oggetto secondo le identiche caratteristiche tecniche e/o funzionali, del prototipo dichiarato di Tipo Approvato con la nota di cui sopra, questo Ministero rinnova, ai fini della sicurezza, la validità dell'approvazione di tipo per i contenitori-distributori rimovibili di carburanti di cat. "C" marca A.M.A. S.r.l. nelle versioni:

- 2 -

"DT-0/15" - capacita max 1.500 litri;
"DT-0/35" - capacita max 3.500 litri;
"DT-0/60" - capacita max 6.000 litri;
"DT-0/80" - capacita max 8.000 litri;
"DT-0/90" - capacita max 9.000 litri.

L'installazione temporanea delle predette apparecchiature dovrà effettuarsi con l'osservanza di tutte le norme di sicurezza vigenti in materia di prevenzione incendi e nel rispetto delle condizioni indicate nella relativa documentazione di prova che deve ritenersi pertanto parte integrante del presente atto.

La validità del presente rinnovo, scade il 20.07.2002, sotto l'espressa condizione di conformità dell'apparecchio in questione al prototipo sottoposto a prova.

Si richiamano inoltre tutti gli obblighi di legge, spettanti all'intestatario sia dell'Atto di Approvazione di Tipo che del presente Atto di Rinnovo, ed a tutti i soggetti comunque interessati a norma del Codice Civile, del Codice Penale, del precitato Decreto Ministeriale 31 luglio 1934 e successive modificazioni e del D.M. 19.3.90.

Il presente Atto di Rinnovo è riproducibile unicamente nella sua integrale stesura ed ha validità esclusivamente se presentato congiuntamente all'originale Atto di Approvazione di Tipo da cui deriva.

p. L'ISPETTORE GENERALE CAPO
IL DIRIGENTE DEL SERVIZIO TECNICO CENTRALE
(Dott. Ing. Alberto d'ERRICO)

N.B.: IL PRESENTE ATTO E'
RIPRODUCIBILE UNICAMENTE
NELLA SUA INTEGRALE STESURA.

[Handwritten signature]
COPIA

[Handwritten signature]

*Ministry of the Interior
CIVIL DEFENCE AND FIRE-FIGHTING
SERVICES DIRECTORATE-GENERAL
CENTRAL TECHNICAL DEPT.
Fire prevention spec. rules
and activities inspectorate*

Rome 2 July 1997

*To: A.M.A. S.r.l.
Via Torre – Fraz. Lughignano
31100 CASALE SUL SILE (TV)*

*Prot. No. NS 28870
4113 sub 170*

RE: A.M.A. S.r.l. – Renewal of validity of Type Approval of A.M.A. brand mobile pump-tanks for cat. “C” fuels in the versions:

*“DT-0/15” – max. capacity 1,500 litres;
“DT-0/35” – max. capacity 3,500 litres;
“DT-0/60” – max. capacity 6,000 litres;
“DT-0/80” – max. capacity 8,000 litres;
“DT-0/90” – max. capacity 9,000 litres.*

*c.c. To the “Ufficio Centrale Metrico” of the
Ministry of Industry, Commerce and
Handicraft
Via Antonio Bosio, 15
00161 ROME*

*To the Management of the “Centro Studi
ed Esperienze
Piazza Scilla 2
00178 Capannelle – ROME*

This Ministry has examined the application submitted by said Company for the purpose of obtaining the renewal of validity of the type approval pursuant to Heading I, subparagraph XVII of Ministerial Decree of 31 July 1934 and subsequent amendments and of Ministerial Decree of 19.03.1900 related to the mobile pump-tanks indicated above.

In this connection, given the Type Approval No. 15911/4113 sub. 170 issued by this Ministry on 04.11.93 and acknowledged the declaration as per the aforesaid application of said Company containing the commitment to construct the above mobile pump-tanks in accordance with the identical specifications and/or functional features as the prototype declared Type Approved with the aforesaid note, this Ministry renews, for safety purposes, the validity of the type approval for the A.M.A. S.r.l. brand mobile pump-tanks for cat. “C” fuels in the versions:

*“DT-0/15” – max. capacity 1,500 litres;
“DT-0/35” – max. capacity 3,500 litres;
“DT-0/60” – max. capacity 6,000 litres;
“DT-0/80” – max. capacity 8,000 litres;
“DT-0/90” – max. capacity 9,000 litres.*

The temporary installation of the aforesaid equipment shall be carried out in compliance with all the current safety regulations regarding fire prevention and in compliance with the conditions indicated in the relative test documentation, which shall therefore be considered an integral part of this document.

The validity of this renewal expires on 20.07.2002 on the express condition of conformity of the equipment in question to the tested prototype.

All the obligations by law are also hereby referred to that are imposed on the holder both of the Type Approval Document and this Document of Renewal and on all persons in any way involved in accordance with the Civil Code, the Criminal Code, the aforesaid Ministerial Decree of 31 July 1934 and subsequent amendments and with Ministerial Decree of 19.3.90.

This Document of Renewal may be reproduced solely in its entirety and is only valid if presented together with the original Type Approval Document from which it is derived.

*for THE CHIEF INSPECTOR-GENERAL
THE CENTRAL TECHNICAL DEPT.
EXECUTIVE
(Dott. Ing. Alberto d'ERRICO)*

N.B. THIS DOCUMENT MAY BE REPRODUCED SOLELY IN ITS ENTIRETY.

MODULARIO
INTERNO - 311

MOD. 1 P.C.



Ministero dell'Interno
DIREZIONE GENERALE DELLA PROTEZIONE CIVILE
E DEI SERVIZI ANTINCENDI
SERVIZIO TECNICO CENTRALE
Ispettorato attività e norm. spec.
di prevenzione incendi

Divisione *Lex*
Prot. N° *NS 6137* *Allegati*
4113 sott. 170



Roma, 3 DIC. 1997 *19*

Al la Soc. A.M.A. S.r.l.
Via Torre - Fraz. Lughignano
31100 CASALE SUL SILE (TV)



Disposta al *Foglio del*
Div. *Lex* *N°*

OGGETTO: Soc. A.M.A. S.r.l. - Estensione dell' Approvazione di tipo dei contenitori-distributori rimovibili per carburanti liquidi di cat. "C" marca A.M.A. S.r.l. dai modelli "DT-0/15", "DT-0/35", "DT-0/60", "DT-0/80" e "DT-0/90" al contenitore-distributore rimovibile per carburanti liquidi di categoria "C" denominato: "DT-0/30" con capacità geometrica massima di 3000 litri.

e.p.c.: All'Ufficio Centrale Metrico del
Ministero dell'Industria del
Commercio e dell'Artigianato
Via Antonio Bosio, 15
00161 R O M A

COPIA

Alla Direzione del Centro Studi
ed Esperienze
Piazza Scilla n°2
00178 Capannelle - R O M A

Questo Ministero ha esaminato l'istanza presentata da codesta Società intesa ad ottenere l'estensione dell'approvazione di tipo ai sensi del Titolo I, punto XVII del D.M. 31 luglio 1934 e successive modificazioni e del D.M. 19.03.1990 relativa ai contenitori-distributori rimovibili indicati in oggetto.

Al riguardo, vista la documentazione prodotta, tenuto conto di quanto è stato riferito con certificato di prova n° 3704/1102/344/37/23 A rilasciato in data 16.09.1997 dal Centro Studi ed Esperienze, questo Ministero estende la validità dell'Approvazione di tipo, ai fini della sicurezza, dai contenitori-distributori rimovibili per carburanti liquidi di categoria "C" marca: A.M.A. S.r.l., nei modelli "DT-0/15", "DT-0/35", "DT-0/60", "DT-0/80" e "DT-0/90" ai contenitori distributori rimovibili per carburanti liquidi di categoria "C" della stessa marca, denominati: "DT-0/30" con capacità geometrica massima di litri 3000.

./.

- 2 -

L'installazione temporanea delle predette apparecchiature dovrà effettuarsi con l'osservanza di tutte le norme di sicurezza vigenti in materia di prevenzione incendi e nel rispetto delle condizioni indicate nella relativa documentazione di prova che deve ritenersi pertanto parte integrante del presente atto.

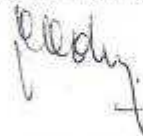
La presente Approvazione per estensione ha validità cinque anni a decorrere dalla data del presente atto, sotto l'espressa condizione di conformità dell'apparecchio in questione al prototipo sottoposto a prova.

Si richiamano inoltre tutti gli obblighi di legge, spettanti sia all'intestatario dell'Atto di Approvazione di Tipo che a tutti i soggetti comunque interessati a norma del Codice Civile, del Codice Penale, del precitato Decreto Ministeriale 31 luglio 1934 e successive modificazioni e del D.M. 19.3.90.

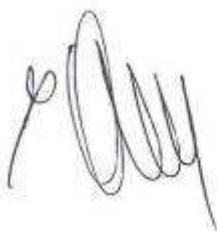
Di quanto sopra si informa anche, per gli adempimenti di competenza, l'Ufficio Centrale Metrico del Ministero dell'Industria, del Commercio e dell'Artigianato.

COPIA

p. L'ISPETTORE GENERALE CAPO
IL DIRIGENTE DEL SERVIZIO TECNICO CENTRALE
(Dott. Ing. Alberto d'ERRICO)



N.B.: IL PRESENTE ATTO E'
RIPRODUCIBILE UNICAMENTE
NELLA SUA INTEGRALE STESURA.



*Ministry of the Interior
CIVIL DEFENCE AND FIRE-FIGHTING
SERVICES DIRECTORATE-GENERAL
CENTRAL TECHNICAL DEPT.
Fire prevention spec. rules
and activities inspectorate*

Rome 3 December 1997

*To: A.M.A. S.r.l.
Via Torre – Fraz. Lughignano
31100 CASALE SUL SILE (TV)*

*Prot. No. NS 6137
4113 sub 170*

RE: A.M.A. S.r.l. – Extension of Type Approval of A.M.A. S.r.l. brand mobile pump-tanks for cat. “C” liquid fuels in the models “DT-0/15”, “DT-0/35”, “DT-0/60”, “DT-0/80” and “DT-0/90” to the mobile pump-tank for category “C” liquid fuels called: “DT-0/30” with maximum geometric capacity of 3,000 litres.

*c.c. To the “Ufficio Centrale Metrico” of the
Ministry of Industry, Commerce and
Handicraft
Via Antonio Bosio, 15
00161 ROME*

*To the Management of the “Centro Studi
ed Esperienze
Piazza Scilla 2
00178 Capannelle – ROME*

This Ministry has examined the application submitted by said Company for the purpose of obtaining the extension of the type approval pursuant to Heading I, subparagraph XVII of Ministerial Decree of 31 July 1934 and subsequent amendments and of Ministerial Decree of 19.03.1900 related to the mobile pump-tanks indicated above.

In this connection, given the documentation produced, taking into account all that has been referred to with test certificate No. 3704/1102/344/37/23 A issued on 16.09.1997 by the Centro Studi ed Esperienze, this Ministry extends the validity of the Type Approval, for safety purposes, of A.M.A. S.r.l. brand mobile pump-tanks for cat. “C” liquid fuels in the models “DT-0/15”, “DT-0/35”, “DT-0/60”, “DT-0/80” and “DT-0/90” to the mobile pump-tank of the same brand for category “C” liquid fuels, called: “DT-0/30” with maximum geometric capacity of 3,000 litres.

The temporary installation of the aforesaid equipment shall be carried out in compliance with all the current safety regulations regarding fire prevention and in compliance with the conditions indicated in the relative test documentation, which shall therefore be considered an integral part of this document.

This Approval for extension is valid for five years as from the date of this document, on the express condition of conformity of the equipment in question to the tested prototype.

All the obligations by law are also hereby referred to that are imposed both on the holder of the Type Approval Document and on all persons in any way involved in accordance with the Civil Code, the Criminal Code, the aforesaid Ministerial Decree of 31 July 1934 and subsequent amendments and with Ministerial Decree of 19.3.90.

For the necessary fulfilment of requirements, the Ufficio Centrale Metrico of the Ministry of Industry, Commerce and Handicraft is also informed of the foregoing.

*for THE CHIEF INSPECTOR-GENERAL
THE CENTRAL TECHNICAL DEPT.
EXECUTIVE
(Dott. Ing. Alberto d'ERRICO)*

N.B. THIS DOCUMENT MAY BE REPRODUCED SOLELY IN ITS ENTIRETY.

MODULARIO
INTERNO - 311

MOD. 1 P.C.



Roma, 10 NOV. 2000

Ministero dell'Interno
DIREZIONE GENERALE DELLA PROTEZIONE CIVILE
SERVIZIO TECNICO CENTRALE
ISPETTORATO ATTIVITA' E NORMATIVE
SPECIALI DI PREVENZIONE INCENDI

Al la Soc. AMA S.r.l.
Via Torre - Località Lughignano
31032 CASALE SUL SILE (TV)

Divisione _____
Prot. N.° NS 6187
4113 sott. 170

Risposta al Foglio del
Div. _____

OGGETTO: Soc. AMA S.r.l. - Approvazione di tipo per estensione dai distributori - contenitori rimovibili per carburanti liquidi di Cat. C. Marca: "A.M.A. S.r.l." nelle versioni:

- "DT-0/15" con capacità geometrica massima litri 1.500;
- "DT-0/35" " " " " " 3.500;
- "DT-0/60" " " " " " 6.000;
- "DT-0/80" " " " " " 8.000;
- "DT-0/90" " " " " " 9.000;

alle versioni:

- "DT-0/20" con capacità geometrica massima litri 2.000;
- "DT-0/50" " " " " " 5.000;
- "DT-0/70" " " " " " 7.000;

per variazione delle dimensioni del contenitore dovute alle nuove capacità geometriche massime.

COPIA

e, p.c.: All'Ufficio Centrale Metrico del
Ministero dell'Industria del
Commercio e dell'Artigianato
Via Antonio Bosio, 15
00161 ROMA

Alla Direzione del Centro Studi ed
Esperienze
Largo S. Barbara, 2
00178 CAPANNELLE - ROMA

ISTITUTO POLIGRAFICO E ZECCA DELLO STATO - R.

Questo Ministero ha esaminato l'istanza presentata da codesta Società intesa ad ottenere l'approvazione di tipo per estensione, ai sensi del Titolo I, punto XVII del D.M. 31.07.1934 e successive modificazioni e del D.M. 19.03.1990 relativa ai prototipi di contenitori-distributori rimovibili indicati in oggetto.

- 2 -

Al riguardo, vista la documentazione prodotta, tenuto conto di quanto è stato riferito con **certificato di prova n° 3704/1102/672/37/23 B** rilasciato in data **13 settembre 2000** dal Centro Studi ed Esperienze, questo Ministero **ESTENDE**, ai fini della prevenzione incendi, l'**Approvazione di tipo** relativa ai **Contenitori-distributori rimovibili per carburanti di categoria "C"**, marca: **"A.M.A. S.r.l."** nelle versioni: **"DT-0/15"**, **"DT-0/35"**, **"DT-0/60"**, **"DT-0/80"** e **"DT-0/90"**, **alle versioni: "DT-0/20", "DT-0/50" e "DT-0/70" per variazione delle dimensioni del contenitore dovute alle nuove capacità geometriche massime.**

L'installazione temporanea delle predette apparecchiature dovrà essere effettuata con l'osservanza di tutte le norme di sicurezza vigenti e nel rispetto di quanto indicato nella suddetta documentazione di prova, che deve pertanto ritenersi parte integrante del presente atto.

La presente approvazione di tipo per estensione ha validità sino al 20 luglio 2002 sotto l'espressa condizione di conformità delle apparecchiature in questione al prototipo sottoposto a prova.

Si richiamano inoltre tutti gli obblighi di legge, spettanti sia all'intestatario dell'atto di Approvazione di Tipo che a tutti i soggetti comunque interessati a norma del Codice Civile, del Codice Penale e dei precitati Decreti Ministeriali.

Di quanto sopra si informa anche, per gli adempimenti di competenza, l'Ufficio Centrale Metrico del Ministero dell'Industria, del Commercio e dell'Artigianato.

COPIA

IL DIRIGENTE DEL
SERVIZIO TECNICO CENTRALE
(Dott. Ing. Giorgio MAZZINI)



**Ministry of the Interior
CIVIL DEFENCE DIRECTORATE-GENERAL
CENTRAL TECHNICAL DEPT.**

**Fire prevention spec. rules
and activities inspectorate**

Rome 10 November 2000

**To: A.M.A. S.r.l.
Via Torre – District Lughignano
31032 CASALE SUL SILE (TV)**

**Prot. No. NS 6187
4113 sub 170**

**RE: A.M.A. S.r.l. – Extension of Type Approval of
A.M.A. S.r.l. brand mobile pump-tanks for cat. “C” liquid fuels in the versions:
“DT-0/15” with maximum geometric capacity 1,500 litres;
“DT-0/35” with maximum geometric capacity 3,500 litres;
“DT-0/60” with maximum geometric capacity 6,000 litres;
“DT-0/80” with maximum geometric capacity 8,000 litres;
“DT-0/90” with maximum geometric capacity 9,000 litres;
to the versions:
“DT-0/20” with maximum geometric capacity 2,000 litres;
“DT-0/50” with maximum geometric capacity 5,000 litres;
“DT-0/70” with maximum geometric capacity 7,000 litres;
because of change in tank size due to new maximum geometric capacities.**

**c.c. To the “Ufficio Centrale Metrico” of the
Ministry of Industry, Commerce and
Handicraft
Via Antonio Bosio, 15
00161 ROME**

**To the Management of the “Centro Studi
ed Esperienze
Piazza Scilla 2
00178 Capannelle – ROME**

This Ministry has examined the application submitted by said Company for the purpose of obtaining the extension of the type approval pursuant to Heading I, subparagraph XVII of Ministerial Decree of 31 July 1934 and subsequent amendments and of Ministerial Decree of 19.03.1900 related to the mobile pump-tank prototypes indicated above.

In this connection, given the documentation produced, taking into account all that has been referred to with test certificate No. 3704/1102/672/37/23 B issued on 13 September 2000 by the Centro Studi ed Esperienze, this Ministry extends, for fire safety purposes, the Type Approval of A.M.A. S.r.l. brand mobile pump-tanks for cat. “C” liquid fuels in the models “DT-0/15”, “DT-0/35”, “DT-0/60”, “DT-0/80” and “DT-0/90”; to the versions: “DT-0/20”, “DT-0/50” and “DT-0/70” because of change in tank size due to new maximum geometric capacities.

The temporary installation of the aforesaid equipment shall be carried out in compliance with all the current safety regulations regarding fire prevention and in compliance with the conditions indicated in the relative test documentation, which shall therefore be considered an integral part of this document.

This Type Approval for extension is valid until 20 July 2002, on the express condition of conformity of the equipment in question to the tested prototype.

All the obligations by law are also hereby referred to that are imposed both on the holder of the Type Approval Document and on all persons in any way involved in accordance with the Civil Code, the Criminal Code, the aforesaid Ministerial Decrees.

For the necessary performance of requirements, the Ufficio Centrale Metrico of the Ministry of Industry, Commerce and Handicraft is also informed of the foregoing.

***THE CENTRAL TECHNICAL DEPT.
EXECUTIVE
(Dott. Ing. Giorgio MAZZINI)***

MODULARIO
INTERNO - 206

Ministero dell'Interno

DIPARTIMENTO DEI VIGILI DEL FUOCO, DEL SOCCORSO PUBBLICO E DELLA DIFESA CIVILE
DIREZIONE CENTRALE PER LA PREVENZIONE E LA SICUREZZA TECNICA

VISTO il decreto ministeriale 31 luglio 1934 recante "Approvazione delle norme di sicurezza per la lavorazione, l'immagazzinamento, l'impiego o la vendita di oli minerali, e per il trasporto degli oli stessi";

VISTO il decreto Ministero Interno 19 marzo 1990 recante "Norme per il riformimento di carburanti, a mezzo di contenitori-distributori mobili, per macchine in uso presso aziende agricole, cave e cantieri";

VISTO il decreto Ministero Interno 27 gennaio 2006 recante "Requisiti degli apparecchi, sistemi di protezione e dispositivi utilizzati in atmosfera potenzialmente esplosiva, ai sensi della direttiva n. 94/9/CE, presenti nelle attività soggette ai controlli antincendio";

VISTO l'atto di approvazione di tipo rilasciato da questo Ministero (nota Prot. 15911 - 4113 sott. 170 del 4 novembre 1993 e successivi rinnovi) relativo ai contenitori-distributori rimovibili per carburanti liquidi per autotrazione di categoria "C" marca A.M.A. S.r.l. modelli "DT-O/15", "DT-O/35", "DT-O/60", "DT-O/80" e "DT-O/90";

VISTO l'atto di approvazione di tipo per estensione rilasciato da questo Ministero (nota Prot. NS 6137 - 4113 sott. 170 del 3 dicembre 1997 e successivi rinnovi) relativo ai contenitori-distributori rimovibili per carburanti liquidi per autotrazione di categoria "C" marca A.M.A. S.p.A. modello "DT-O/30";

VISTO l'atto di approvazione di tipo per estensione rilasciato da questo Ministero (nota Prot. NS 6187 - 4113 sott. 170 del 10 novembre 2000 e successivi rinnovi) relativo ai contenitori-distributori rimovibili per carburanti liquidi per autotrazione di categoria "C" marca A.M.A. S.p.A. modelli "DT-O/20", "DT-O/50" e "DT-O/70";

VISTO l'atto di approvazione di tipo per estensione rilasciato da questo Ministero (nota Prot. DCPST/A7/10502/AT/09170 del 31 gennaio 2004) relativo al contenitore-distributore rimovibile per carburanti liquidi per autotrazione di categoria "C" marca A.M.A. S.p.A. modello "DT-O/10";

VISTA l'istanza presentata dalla Società A.M.A. S.p.A. con sede in Via Torre n° 16 - Località Lughignano - 31032 CASALE SUL SILE (TV), intesa ad ottenere un unico atto di rinnovo della validità ricomprendente tutti i modelli sopraspecificati;

Il presente atto consta di n. 2 facciate e non può essere riprodotto e/o mostrato a terzi se non integralmente..

- 2 -

VISTA la dichiarazione della Società, contenente l'impegno a costruire i contenitori-distributori rimovibili di carburanti liquidi di categoria "C", in oggetto indicati, secondo le identiche caratteristiche tecniche e/o funzionali, dei prototipi dichiarati di tipo approvato con le precitate note;

VISTA la dichiarazione della Società con la quale si attesta che i contenitori-distributori mobili prima specificati sono provvisti di marcatura CE dei componenti ai sensi delle direttive applicabili come prescritto dall'art. 5 comma 4. del Decreto Ministero Interno 27 gennaio 2006.

SI RINNOVA

ai fini della prevenzione incendi, alla Società A.M.A. S.p.A. la validità delle approvazioni di tipo relative ai contenitori-distributori rimovibili per carburanti liquidi per autotrazione di categoria "C" marca A.M.A. S.p.A. modelli "DT-O/10", "DT-O/15", "DT-O/20", "DT-O/30", "DT-O/35", "DT-O/50", "DT-O/60", "DT-O/70", "DT-O/80" e "DT-O/90";

L'installazione delle predette apparecchiature dovrà effettuarsi con l'osservanza di tutte le norme di sicurezza vigenti in materia.

La validità del presente atto scade, sotto l'espressa condizione di conformità delle apparecchiature in questione ai prototipi sottoposti a prova, **20 luglio 2012.**

All'intestatario del presente atto di rinnovo della approvazione di tipo ed ai soggetti comunque interessati, si richiamano tutti gli obblighi di legge derivanti dall'applicazione dei precitati Decreti Ministeriali.

Il presente atto di rinnovo è riproducibile unicamente nella sua integrale stesura ed ha validità esclusivamente se presentato congiuntamente agli originali atti di approvazione di tipo da cui deriva.

Roma, - 2 AGO. 2007

DCPST/A7/5179/AT/09170

IL DIRETTORE CENTRALE
(Dott. Ing. Roberto BARZI)



Il presente atto consta di n. 2 facciate e non può essere riprodotto e/o mostrato a terzi se non integralmente.



Ministry of the Interior

FIRE SERVICE, EMERGENCY SERVICES AND CIVIL DEFENCE DEPARTMENT CENTRAL DIRECTORATE FOR PREVENTION AND TECHNICAL SAFETY

GIVEN Ministerial Decree of 31 July 1934 defining “Approval of safety regulations for the processing, storage, use or sale of mineral oils, and for transportation of the same oils”;

GIVEN Ministry of the Interior Decree of 19 March 1990 defining “Rules and regulations for refuelling with mobile pump-tanks for equipment used on farms, building or work sites and in quarries”;

GIVEN the type approval document issued by this Ministry (note Prot. 15911 – 4113 sub. 170 of 4 November 1993) relative to the A.M.A. S.r.l. brand mobile pump-tanks for category “C” automotive liquid fuels in the models “DT-0/15”, “DT-0/35”, “DT-0/60”, “DT-0/80” and “DT-0/90”;

GIVEN the renewal of validity of the type approval issued by this Ministry (note Prot. NS 2870 – 4113 sub. 170 of 25 July 1997) relative to the A.M.A. S.r.l. brand mobile pump-tanks for category “C” automotive liquid fuels in the models specified above;

GIVEN the type approval document for extension issued by this Ministry (note Prot. NS 6137 – 4113 sub. 170 of 3 December 1997) relative to the A.M.A. S.r.l. brand mobile pump-tanks for category “C” automotive liquid fuels model “DT-0/30”;

GIVEN the type approval document for extension issued by this Ministry (note Prot. NS 6187 – 4113 sub. 170 of 10 November 2000) relative to the A.M.A. S.r.l. brand mobile pump-tanks for category “C” automotive liquid fuels models “DT-0/20”, “DT-0/50” and “DT-0/70”;

GIVEN the applications submitted by the company A.M.A. S.r.l. with registered office in Via Torre 16 – district Lughignano – 31032 CASALE SUL SILE (TV), for the purpose of obtaining a single document of renewal of validity covering all the models specified above;

GIVEN the declaration of the Company, containing the commitment to construct the above mobile pump-tanks for category “C” liquid fuels, as above, in accordance with the identical specifications and/or functional features as the prototypes declared Type Approved with the aforesaid notes;

GIVEN the declaration of the Company with which it certifies that the mobile pump-tanks specified hereinbefore have the EC mark applied on the parts in accordance with applicable directives as set forth under paragraph 4 of section 5 of Ministry of the Interior Decree of 27 January 2006.

RENEWAL IS HEREBY GRANTED

for fire safety purposes, to A.M.A. S.p.A. of the validity of the type approvals relative to the A.M.A. S.p.A. brand mobile pump-tanks for category “C” automotive liquid fuels models “DT-0/10”, “DT-0/15”, “DT-0/20”, “DT-0/30”, “DT-0/35”, “DT-0/50”, “DT-0/60”, “DT-0/70”, “DT-0/80” and “DT-0/90”;

Installation of the aforesaid equipment shall be carried out in compliance with all the applicable current safety regulations.

The validity of this document expires, on the express condition of conformity of the equipment in question to the tested prototypes, on 20 July 2012.

The holder of this type approval renewal document and all persons in any way involved shall comply with all the obligations by law deriving from application of the aforesaid Ministerial Decrees.

This Document of Renewal may be reproduced solely in its entirety and is only valid if presented together with the original Type Approval Document from which it is derived.

Rome 2 August 2007
DCPST/A7/5179/AT/09170

THE CENTRAL MANAGER
(Dott. Ing. Roberto BARZI)

This document consists of 2 sheets and may not be reproduced or shown to a third party except in its entirety.



MACO 31/PC



Ministero dell'Interno

DIPARTIMENTO DEI VIGILI DEL FUOCO,
DEL SOCCORSO PUBBLICO
E DELLA DIFESA CIVILE
DIREZIONE CENTRALE PER LA PREVENZIONE
E LA SICUREZZA TECNICA

AREA VII
MEZZI, MATERIALI, D.P.I. E IMPIANTI
TECNOLOGICI

CERTIFICAZIONE N. 3704/1102 del 7 LUG. 2003
413/37/23D



In relazione alla domanda presentata da:
AMA S.r.l. Via Torre - Località Lughignano - 31032 CASALE SUL SILE (TV), ai sensi della
legge 26.07.1965, N. 966, per l'estensione della certificazione di rispondenza alla normativa di
prevenzione incendi al contenitore distributore mobile per carburanti liquidi di categoria "C":

- Marca: "A.M.A. s.r.l."
- Modello: "DT-O/10" (capacità geometrica massima litri 950).

Vista la certificazione di prova 3704/1102/111/37/23 ed il relativo resoconto di prova rilasciati dal
Centro Studi ed Esperienze del Corpo Nazionale dei Vigili del Fuoco in data 21.07.1992;

Vista l'approvazione di tipo rilasciata dal M.I. - S.T.C. - Isp. Attività e Norm. Spec. di P.I. prot. N.
15911/4113 sott. 170 del 04.11.1993 e successive estensioni;

Vista l'atto di rinnovo dell'approvazione di tipo rilasciato dal M.I. - Dipartimento dei Vigili del
Fuoco, del Soccorso Pubblico e della Difesa Civile - D.C.P.S.T. prot. DCPST/A7/8755/
AT/09170 del 09.10.2002;

vista la documentazione presentata dalla ditta;

rilevato che le modifiche apportate (consistenti nella variazione delle dimensioni del contenitore
dovute alla nuova capacità geometrica massima, ferme restando invariate le caratteristiche
costruttive, gli spessori delle lamiere e le lavorazioni) non alterano le condizioni di sicurezza
che hanno condotto al rilascio della approvazione sulle precedenti apparecchiature,

SI CERTIFICA

che il contenitore distributore mobile sopraindicato è rispondente alla normativa di sicurezza di cui
alle disposizioni:

- D.M. 31.07.1934 titolo I n.XVII e D.M. 19.03.1990.

La validità della presente certificazione è relativa al solo apparecchio sottoposto ad esame e non
riguarda altri aspetti di sicurezza previsti da leggi e regolamenti vigenti, ove applicabili.

L'approvazione, ai fini della prevenzione incendi, è di competenza del Ministero dell'Interno,
Dipartimento dei Vigili del Fuoco, del Soccorso Pubblico e della Difesa Civile - Direzione Centrale
per la Prevenzione e la Sicurezza Tecnica, al quale deve essere inoltrata apposita istanza.

IL DIRETTORE DEL LABORATORIO DI
IMPIANTI TECNOLOGICI

(M. LANGIA)



IL DIRIGENTE

(GERI)


DIREZIONE CENTRALE PER LA PREVENZIONE E LA SICUREZZA TECNICA

Ministry of the Interior

**FIRE SERVICES, EMERGENCY
SERVICES AND CIVIL**

**DEFENCE DEPARTMENT
CENTRAL DIRECTORATE FOR
PREVENTION AND TECHNICAL
SAFETY**

**AREA VII
EQUIPMENT, MATERIALS, PPE**

**CERTIFICATE No. 3704/1102
413/37/23D**

of 7 JULY 2003

With regard to the application submitted by:

AMA S.r.l. Via Torre – District Lughignano – 31032 CASALE SUL SILE (TV), pursuant to Italian Law No. 966 of 26 July 1965, for extension of the certificate of conformity with fire safety requirements of the mobile pump-tank for category “C” liquid fuels;

- Brand: “A.M.A. s.r.l.”
- Model: “DT-0/10” (maximum geometric capacity 950 litres),

Given the test certificate 3704/1102/111/37/23 and relative test report issued by the Centro Studi ed Esperienze of the National Fire Service on 21 July 1992;

Given the type approval issued by the Ministry of the Interior – Central Technical Dept.- Fire Prevention Special Rules and Activities Inspectorate Prot. No. 15911/4113 sub. 170 dated 4 November 1993 and subsequent extensions;

Given the type approval renewal document issued by the Ministry of the Interior – Fire Services, Emergency Services and Civil Defence Department – D.C.P.S.T. prot. DCPST/A7/8755/AT/09170 dated 9 October 2002;

given the documentation produced by the company;

considered that the changes made (consisting of a change in the tank size due to new maximum geometric capacity, without prejudice to the constructional characteristics, sheet metal gauge and the processing) do not alter the safety conditions that have led to the issuing of the approval for the previous equipment,

IT IS HEREBY CERTIFIED

that the above-mentioned mobile pump-tank is in conformity with the safety regulations as per the provisions:

- Ministerial Decree of 31.07.1934 heading I No. XVII and Ministerial Decree of 19.03.1990.

The validity of this certificate is applicable to just the equipment submitted for inspection and does not concern other safety aspects envisaged by current laws and regulations where applicable.

Approval, for the purpose of fire safety and prevention, is the responsibility of the Ministry of the Interior, Fire Services, Emergency Services and Civil Defence Department - Central Directorate for Prevention and Technical Safety, to which the relative application shall be sent.

**TECHNOLOGICAL SYSTEMS
LABORATORY MANAGER
(M. LANCIA)**

**THE DIRECTOR
(GERI)**

MODULARIO
INTERNO - 206

Ministero dell'Interno

DIPARTIMENTO DEI VIGILI DEL FUOCO, DEL SOCCORSO PUBBLICO E DELLA DIFESA CIVILE
DIREZIONE CENTRALE PER LA PREVENZIONE E LA SICUREZZA TECNICA

VISTO il decreto ministeriale 31 luglio 1934 recante "Approvazione delle norme di sicurezza per la lavorazione, l'immagazzinamento, l'impiego o la vendita di oli minerali, e per il trasporto degli oli stessi";

VISTO il decreto Ministero Interno 19 marzo 1990 recante "Norme per il rifornimento di carburanti, a mezzo di contenitori-distributori mobili, per macchine in uso presso aziende agricole, cave e cantieri";

VISTO il decreto Ministero Interno 27 gennaio 2006 recante "Requisiti degli apparecchi, sistemi di protezione e dispositivi utilizzati in atmosfera potenzialmente esplosiva, ai sensi della direttiva n. 94/9/CE, presenti nelle attività soggette ai controlli antincendio";

VISTO l'atto di approvazione di tipo rilasciato da questo Ministero (nota Prot. 15911 - 4113 sott. 170 del 4 novembre 1993 e successivi rinnovi) **relativo ai contenitori-distributori rimovibili per carburanti liquidi per autotrazione di categoria "C" marca A.M.A. S.r.l. modelli "DT-O/15", "DT-O/35", "DT-O/60", "DT-O/80" e "DT-O/90";**

VISTO l'atto di approvazione di tipo per estensione rilasciato da questo Ministero (nota Prot. NS 6137 - 4113 sott. 170 del 3 dicembre 1997 e successivi rinnovi) **relativo ai contenitori-distributori rimovibili per carburanti liquidi per autotrazione di categoria "C" marca A.M.A. S.p.A. modello "DT-O/30";**

VISTO l'atto di approvazione di tipo per estensione rilasciato da questo Ministero (nota Prot. NS 6187 - 4113 sott. 170 del 10 novembre 2000 e successivi rinnovi) **relativo ai contenitori-distributori rimovibili per carburanti liquidi per autotrazione di categoria "C" marca A.M.A. S.p.A. modelli "DT-O/20", "DT-O/50" e "DT-O/70";**

VISTO l'atto di approvazione di tipo per estensione rilasciato da questo Ministero (nota Prot. DCPST/A7/10502/AT/09170 del 31 gennaio 2004) **relativo al contenitore-distributore rimovibile per carburanti liquidi per autotrazione di categoria "C" marca A.M.A. S.p.A. modello "DT-O/10";**

VISTA l'istanza presentata dalla Società A.M.A. S.p.A. con sede in Via Torre n° 16 - Località Lughignano - 31032 CASALE SUL SILE (TV), intesa ad ottenere un unico atto di rinnovo della validità ricomprendente tutti i modelli sopraspecificati;

Il presente atto consta di n. 2 facciate e non può essere riprodotto e/o mostrato a terzi se non integralmente..

- 2 -

VISTA la dichiarazione della Società, contenente l'impegno a costruire i contenitori-distributori rimovibili di carburanti liquidi di categoria "C", in oggetto indicati, secondo le identiche caratteristiche tecniche e/o funzionali, dei prototipi dichiarati di tipo approvato con le precitate note;

VISTA la dichiarazione della Società con la quale si attesta che i contenitori-distributori mobili prima specificati sono provvisti di marcatura CE dei componenti ai sensi delle direttive applicabili come prescritto dall'art. 5 comma 4. del Decreto Ministero Interno 27 gennaio 2006.

SI RINNOVA

ai fini della prevenzione incendi, alla Società A.M.A. S.p.A. la validità delle approvazioni di tipo relative ai contenitori-distributori rimovibili per carburanti liquidi per autotrazione di categoria "C" marca A.M.A. S.p.A. modelli "DT-O/10", "DT-O/15", "DT-O/20", "DT-O/30", "DT-O/35", "DT-O/50", "DT-O/60", "DT-O/70", "DT-O/80" e "DT-O/90";

L'installazione delle predette apparecchiature dovrà effettuarsi con l'osservanza di tutte le norme di sicurezza vigenti in materia.

La validità del presente atto scade, sotto l'espressa condizione di conformità delle apparecchiature in questione ai prototipi sottoposti a prova, **20 luglio 2012**.


All'intestatario del presente atto di rinnovo della approvazione di tipo ed ai soggetti comunque interessati, si richiamano tutti gli obblighi di legge derivanti dall'applicazione dei precitati Decreti Ministeriali.

Il presente atto di rinnovo è riproducibile unicamente nella sua integrale stesura ed ha validità esclusivamente se presentato congiuntamente agli originali atti di approvazione di tipo da cui deriva.

Roma, - 2 AGO. 2007

DCPST/A7/5179/AT/09170

IL DIRETTORE CENTRALE
(Dott. Ing. Roberto BARZI)



Il presente atto consta di n. 2 facciate e non può essere riprodotto e/o mostrato a terzi se non integralmente.



MODULARIO
INTERNO - 206


COPIA

MOD. 6 U.C.O.

Ministero dell'Interno

DIPARTIMENTO DEI VIGILI DEL FUOCO, DEL SOCCORSO PUBBLICO E DELLA DIFESA CIVILE
DIREZIONE CENTRALE PER LA PREVENZIONE E LA SICUREZZA TECNICA

VISTO il decreto ministeriale 31 luglio 1934 recante "Approvazione delle norme di sicurezza per la lavorazione, l'immagazzinamento, l'impiego o la vendita di oli minerali, e per il trasporto degli oli stessi";

VISTO il decreto Ministero Interno 19 marzo 1990 recante "Norme per il rifornimento di carburanti, a mezzo di contenitori-distributori mobili, per macchine in uso presso aziende agricole, cave e cantieri";

VISTO il decreto Ministero Interno 27 gennaio 2006 recante "Requisiti degli apparecchi, sistemi di protezione e dispositivi utilizzati in atmosfera potenzialmente esplosiva, ai sensi della direttiva n. 94/9/CE, presenti nelle attività soggette ai controlli antincendio";

VISTO l'atto di approvazione di tipo rilasciato da questo Ministero (nota Prot. 15911 - 4113 sott. 170 del 4 novembre 1993 e successivi rinnovi ed estensioni) **relativi ai contenitori-distributori rimovibili per carburanti liquidi per autotrazione di categoria "C" marca A.M.A. S.r.l. modelli "DT-O/10", "DT-O/15", "DT-O/20", "DT-O/30", "DT-O/35", "DT-O/50", "DT-O/60", "DT-O/70", "DT-O/80" e "DT-O/90";**

VISTA l'istanza presentata dalla Società A.M.A. S.p.A. con sede in Via Torre n° 16 - Località Lughignano - 31032 CASALE SUL SILE (TV), intesa ad ottenere l'approvazione di tipo, per estensione, dei contenitori-distributori rimovibili di carburanti liquidi per autotrazione di categoria "C" nelle versioni sopraspecificate, per applicazione sull'intera gamma, in alternativa a quelli precedentemente adottati, di ulteriori erogatori;

VISTA la estensione della certificazione n. 3704/1102/37/23 E rilasciata al riguardo dall'Area VII della Direzione Centrale per la Prevenzione e la Sicurezza Tecnica in data 15.10.2009;

VISTA la dichiarazione della Società, contenente l'impegno a costruire i contenitori-distributori rimovibili di carburanti liquidi di categoria "C", in oggetto indicati, secondo le identiche caratteristiche tecniche e/o funzionali, dei prototipi dichiarati di tipo approvato con le precitate note;

Il presente atto consta di n. 3 facciate e non può essere riprodotto e/o mostrato a terzi se non integralmente..



- 2 -

COPIA

VISTA la dichiarazione della Società con la quale si attesta che i contenitori-distributori mobili prima specificati sono provvisti di marcatura CE dei componenti ai sensi delle direttive applicabili come prescritto dall'art. 5 comma 4. del Decreto Ministero Interno 27 gennaio 2006.

SI ESTENDE

ai fini della prevenzione incendi, alla Società A.M.A. S.p.A., la approvazione di tipo relativa ai contenitori-distributori rimovibili per carburanti liquidi per autotrazione di categoria "C":

- Marca: "A.M.A. S.p.A."
- Versioni "DT-O/10" (capacità geometrica litri 950);
 - "DT-O/15" con capacità geometrica litri 1.500;
 - "DT-O/20" con capacità geometrica litri 2.000;
 - "DT-O/30" con capacità geometrica litri 3.000;
 - "DT-O/35" con capacità geometrica litri 3.500;
 - "DT-O/50" con capacità geometrica litri 5.000;
 - "DT-O/60" con capacità geometrica litri 6.000;
 - "DT-O/70" con capacità geometrica litri 7.000;
 - "DT-O/80" con capacità geometrica litri 8.000;
 - "DT-O/90" con capacità geometrica litri 9.000.

dotati di uno dei seguenti erogatori:

- erogatori contenuti in apposita cassetta, (dotata di quadro elettrico versione ACP A 230 V o 12/24 V):
 - marca PIUSI modello "E 80" o modello "E 120";
 - marca PIUSI versioni PANTHER 56 e PANTHER 72;
 - marca PIUSI versioni BP 2000 e BIPOMPA a 12 o 24 volt;
 - marca PIUSI, versioni "PANTHER DC 12V" e "PANTHER DC 24/12 V";
 - marca USINES DE RUMAUCURT, versioni PS 30, PS 48N e PS 70;
 - marca "TO.ME.S. S.r.l.", versioni "TOM 56" e "TOM 78";
- erogatori dotati di fasciame proprio:
 - marca PIUSI mod. "CUBE 56/33", mod. "CUBE 56/MC", mod. "CUBE 70/33" mod. "CUBE 70/MC";
 - marca PIUSI, versioni "CUBE K33 DC 12V" e "CUBE K33 DC 24V",
 - marca PIUSI mod. SELF SERVICE nelle versioni SELF SERVICE 70 MC, SELF SERVICE 70 MC F, SELF SERVICE 70 MC F P, SELF SERVICE 70 MC FM, SELF SERVICE 100 MC, SELF SERVICE 100 MC F, SELF SERVICE 100 MC F P, SELF SERVICE 100 MC FM, SELF SERVICE 70 K44, SELF SERVICE 70 K44 F, SELF SERVICE 100 K44 e SELF SERVICE 100 K44 F;
 - marca "TO.ME.S. S.r.l.", versioni "SELF 55", "SELF 80", "ROLL - MATIC 60" e "ROLL - MATIC 80";
- distributori industriali dotati di fasciame proprio
 - marca TOKHEIM modello "QUANTIUM 100T" (singolo monofronte o alternato monofronte);
 - marca MASER modello "793 NP" industriale;

Il presente atto consta di n. 3 facciate e non può essere riprodotto e/o mostrato a terzi se non integralmente.

COPIA

- 3 -

- marca A.M.A. S.p.A., modello "DAS 50", "DAS 80", "DAS 130" e "DAS 50/130" alternato
- marca TATSUNO, modello "BMP 500.S";
- marca "ASSYTECH s.r.l.", modello "AT01", "AT02", "AT03" (singolo monofronte o alternato monofronte);
- marca RIDART modello "EROGO 50" o "EROGO 90",
- marca "GAMBA GIUSEPPE & C. s.n.c.", serie "FIMAC" versione "M" nelle varianti "IND" e "NEW IND";
- marca "GAMBA GIUSEPPE & C. s.n.c.", serie "GPM-50" versioni "GPM-50A1", "GPM-50A2" e "GPM-50C".

L'installazione delle predette apparecchiature dovrà effettuarsi con l'osservanza di tutte le norme di sicurezza vigenti in materia.

La validità del presente atto scade, sotto l'espressa condizione di conformità delle apparecchiature in questione ai prototipi sottoposti a prova, **20 luglio 2012**.

All'intestatario del presente atto di estensione della approvazione di tipo ed ai soggetti comunque interessati, si richiamano tutti gli obblighi di legge derivanti dall'applicazione dei precitati Decreti Ministeriali.

Il presente atto di estensione è riproducibile unicamente nella sua integrale stesura ed ha validità esclusivamente se presentato congiuntamente all'originale atto di approvazione di tipo da cui deriva.

Roma, **20 NOV. 2009**

DCPST/A7/14751/AT/09170

IL DIRETTORE CENTRALE
(FABIO DATILO)

Il presente atto consta di n. 3 facciate e non può essere riprodotto e/o mostrato a terzi se non integralmente.